

RNAV (GPS) RWY 36

APCH CRS	Rwy Idg	7126
005°	TDZE	129
	Arpt Elev	141

AL-150 (USAF)
MC GUIRE FIELD (JOINT BASE MC GUIRE DIX LAKEHURST) (KWRI)

<p>▼ * Circling NA SE of Rwy 24 and E of Rwy 36 when R-5001 A/B Active.</p>	<p>MISSED APPROACH: Climb to 2000 direct DUOVR, then turn right direct FATBU and hold.</p>
--	--

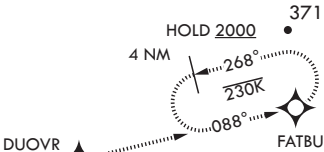
ATIS 110.6 270.1	MC GUIRE APP CON/DEP CON 126.475 363.8	TOWER 118.65 255.6	GND CON 121.8 275.8	CLNC DEL 135.2 335.8	PAR
---------------------	---	-----------------------	------------------------	-------------------------	-----

DME/DME RNP-0.3 NA

RADAR required when R-5001 is active.

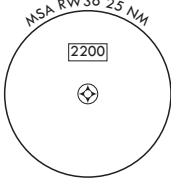
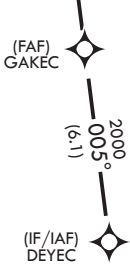
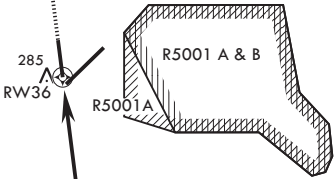
RADAR required for holding above 2000 and/or > 230 KIAS.

If RADAR inoperative, expect 15 min delay for deactivation of R-5001.



Alternate Missed Approach instructions: Climb to 2000 direct DUOVR, expect further clearance from ATC.

Missed approach holding at FATBU NA when R-5001 is active with aerial gunnery.



EMERG SAFE ALT 100 NM 5100

2000

DUOVR

GAKEC

DEYEC

1.2 NM to RW36

5.5 NM

2000

2000

005°

≤ 3.13°

TCH 46

CATEGORY	A	B	C	D	E
LNAV MDA	560-1	431 (500-1)	560-1½	431 (500-1½)	
C CIRCLING*	680-1	539 (600-1)	700-1½ 559 (600-1½)	700-2 559 (600-2)	1200-3 1059 (1100-3)

ELEV 141

TDZE 129

BCN 306

REIL all Rwys

TDZL/CL Rwy 6

81

7126 x 150

TWR 228

10014 x 150

0.3% UP

005°

285

RNAV (GPS) RWY 36