

WRIGHTSTOWN, NEW JERSEY

WAAS CH 91359 W24A	APCH CRS 238°	Rwy ldg TDZE Arpt Elev	10,014 117 141
--------------------------	------------------	------------------------------	----------------------

AL-150 (USAF)
MC GUIRE FIELD (JOINT BASE MC GUIRE DIX LAKEHURST) (KWRI)

RNAV (GPS) RWY 24

⚠ * When ALS inop, increase RVR to 40, vis to ¾ mile.
** When ALS inop, increase vis to 1 3/8 miles.
*** When ALS inop increase CAT AB RVR to 55, vis to 1 mile, CAT CDE vis to 1 3/8 miles.

ALSF-1

MISSED APPROACH: Climb to 2000
direct CISON and hold.

ATIS 110.6 270.1	MC GUIRE APP CON/DEP CON 126.475 363.8	TOWER 118.65 255.6	GND CON 121.8 275.8	CLNC DEL 135.2 335.8	PAR
---------------------	---	-----------------------	------------------------	-------------------------	-----

**** Circling NA SE of Rwy 24 and E of Rwy 36 when R-5001 A/B Active.

DME/DME RNP-0.3 NA

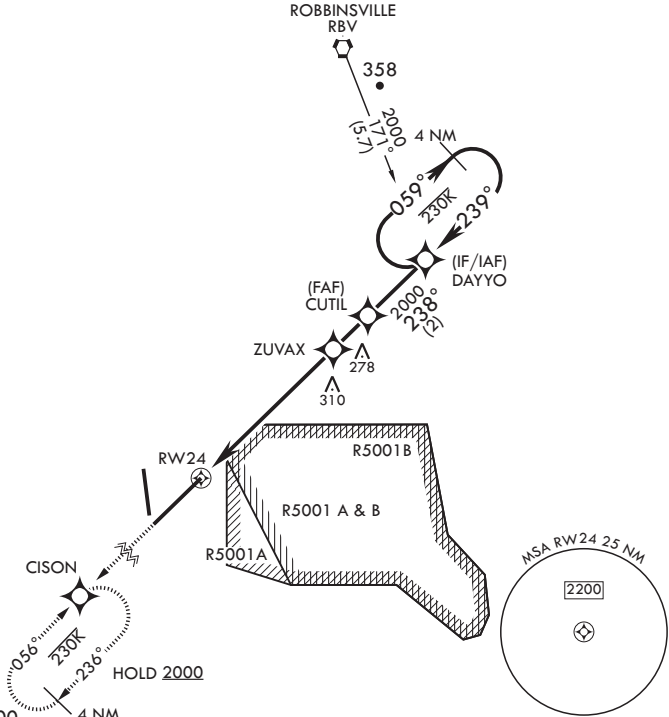
For uncompensated Baro-VNAV systems, Procedure NA below -15°C (5°F) or above 53°C (128°F).

RADAR required when R-5001 is active.

RADAR required for holding above 2000 and/or > 230 KIAS.

If RADAR inoperative, expect 15 min delay for deactivation of R-5001.

When R-5001 is active with aerial gunnery, DAYYO hold-in-lieu of procedure turn NA, expect RADAR vectors.



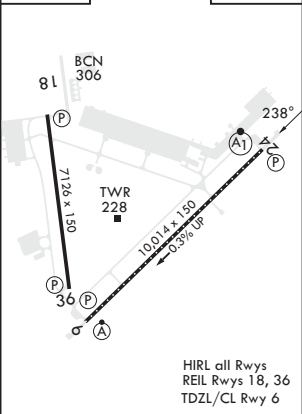
EMERG SAFE ALT 100 NM 5100

2000
↑
CISON

VGSI and RNAV glidepath not coincident (VGSI angle 3.00/TCH 75.60).

4 NM Holding Pattern
DAYYO
059°
239°
2000
ZUVAX
238°
2000
RW24
1.3 NM to RW24
1600
4.6 NM
1.2 NM
GP 3.00°
TCH 49

ELEV 141	TDZE 117
----------	----------



CATEGORY	A	B	C	D	E
LPV DA*	317/24	200	(200-½)		
LNAV/VNAV DA**	580/50	463	(500-1)		
LNAV MDA***	580/24 463 (500-½)	580/50 463 (500-1)			
C CIRCLING****	680-1 539 (600-1)	700-1½ 559 (600-1½)	700-2 559 (600-2)	1200-3 1059 (1100-3)	

WRIGHTSTOWN, NEW JERSEY

Amdt 7 18MAY23

MC GUIRE FIELD (JOINT BASE MC GUIRE DIX LAKEHURST) (KWRI)

40°01'N - 74°36'W

RNAV (GPS) RWY 24

NE-2, 10 JUL 2025 to 07 AUG 2025

NE-2, 10 JUL 2025 to 07 AUG 2025