

APCH CRS 185°	Rwy Idg 7126 TDZE 123 Arpt Elev 141
------------------	---

AL-150 (USAF)
MC GUIRE FIELD (JOINT BASE MC GUIRE DIX LAKEHURST) (KWRI)

T * Circling NA SE of Rwy 24 and E of Rwy 36 when R-5001 A/B Active.

MISSED APPROACH: Climb to 2000 direct KRZZ and hold.

ATIS 110.6 270.1	MC GUIRE APP CON/DEP CON 126.475 363.8	TOWER 118.65 255.6	GND CON 121.8 275.8	CLNC DEL 135.2 335.8	PAR
---------------------	---	-----------------------	------------------------	-------------------------	-----

DME/DME RNP-0.3 NA

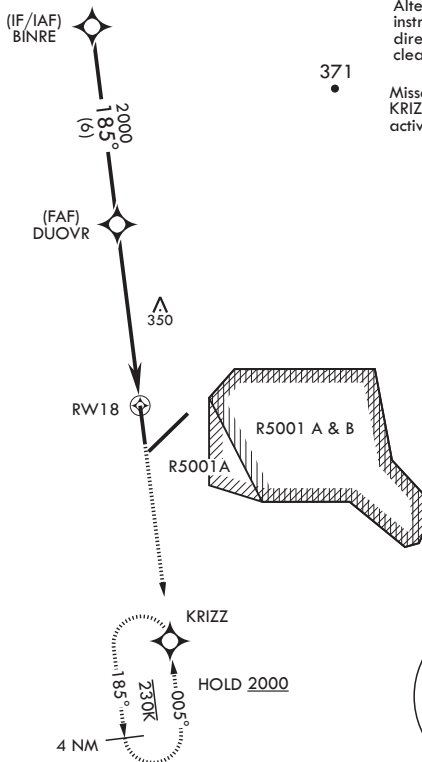
RADAR required when
R-5001 is active and/or
R-5002 is active.

RADAR required for holding above 2000 and/or > 230 KIAS.

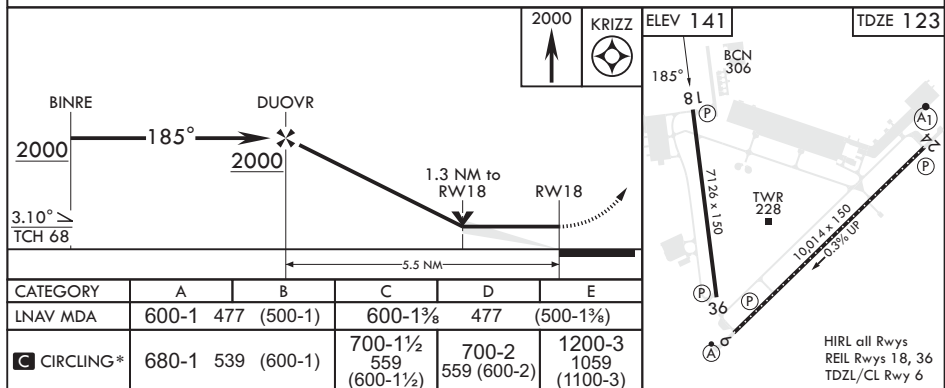
If RADAR inoperative, expect 15 min delay for deactivation of R-5001 and/or R-5002.

Alternate Missed Approach
instructions: Climb to 2000
direct KRIZZ, expect further
clearance from ATC.

Missed approach holding at KRIZZ NA when R-5001 is active with aerial gunnery.



EMERG SAFE ALT 100 NM 5100



WRIGHTSTOWN, NEW JERSEY

MC GUIRE FIELD (JOINT BASE MC GUIRE DIX LAKEHURST) (KWRI)

Amdt 6 18MAY23

40°01'N - 74°36'W

RNAV (GPS) RWY 18

HIRL all Rwy's
REIL Rwy's 18, 36
TDZL /CL Rwy 6

NE-2, 10 JUL 2025 to 07 AUG 2025

NE-2, 10 JUL 2025 to 07 AUG 2025