

ILS or LOC RWY 6

MC GUIRE FLD.

AL-150 [USAF]

(JOINT BASE MC GUIRE DIX LAKEHURST) (KWRI)

LOC I-WRI <u>110.1</u>	APCH CRS 058°	Rwy Idg 10,014 TDZE 131 Arpt Elev 141
----------------------------------	-------------------------	--

RADAR or DME required to identify the FAF.

ALSF-2

MISSED APPROACH: Climb to 2000 via GXU R-059 to DAYVO and hold.

Alternate Missed Approach Instruction:

Climb to 2000 via GXU R-059 to DAYYO, expect further clearance from ATC.

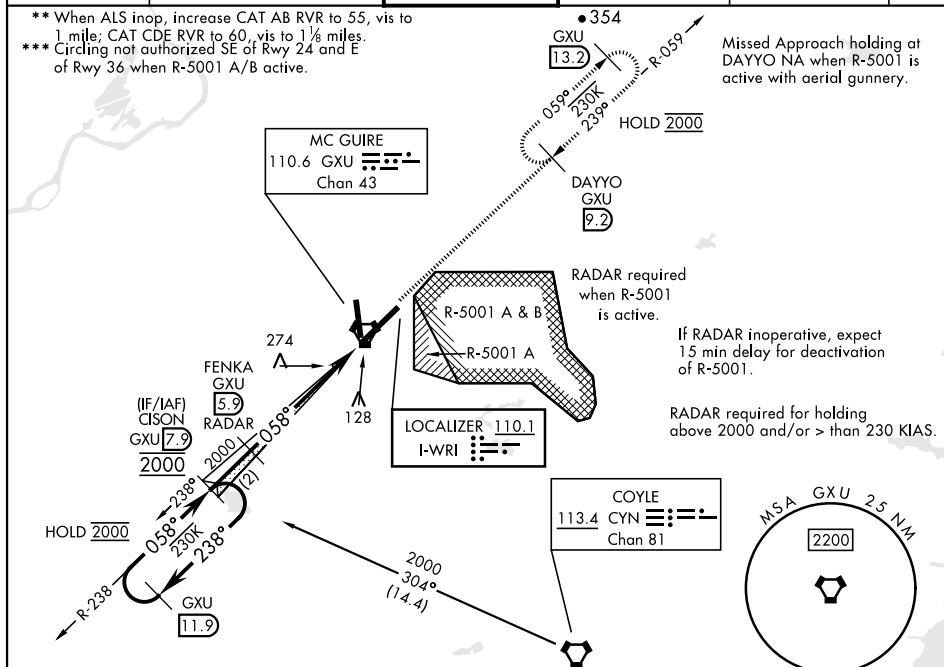
ATIS 110.6 270.1	MC GUIRE APP CON/DEP CON 126.475 363.8	MC GUIRE TOWER 118.65 255.6	GND CON 121.8 275.8	CLNC DEL 135.2 335.8	PAR
----------------------------	--	---------------------------------------	-------------------------------	--------------------------------	-----

** When ALS inop, increase CAT AB RVR to 55, vis to

1 mile; CAT CDE RVR to 60, vis to 1 1/8 miles.

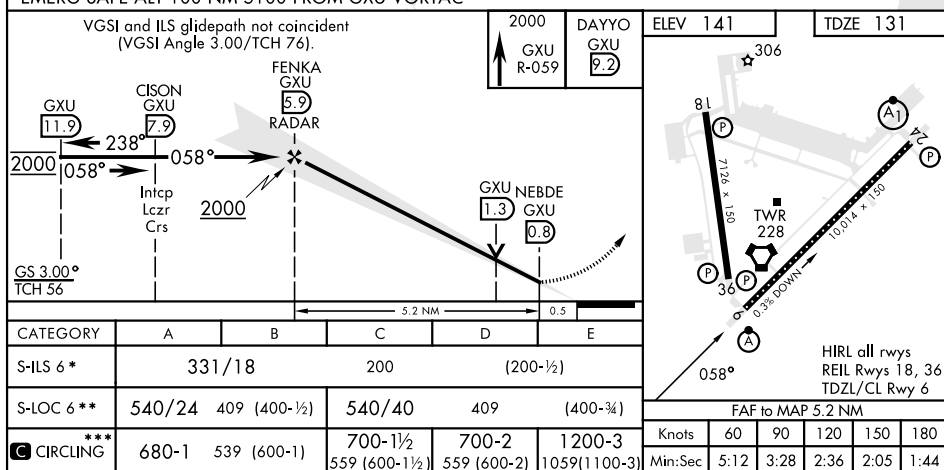
*** Circling not authorized SE of Rwy 24 and E of Rwy 36 when R-5001 A/B active.

Missed Approach holding at DAYVO NA when R-5001 is active with aerial gunnery.



EMERG SAFE ALT 100 NM 5100 FROM GXU VORTAC

VGSI and ILS glidepath not coincident
(VGSI Angle 3.00/TCH 76).



HIRL all rwys
REIL Rwy 18, 36

FAF to MAP 5.2 NM

Knots	60	90	120	150	180
Min:Sec	5:12	3:28	2:36	2:05	1:44

WRIGHTSTOWN, NEW JERSEY

40°01'N-74°36'W

MC GUIRE FLD.

Amdt 5 18MAY23

(JOINT BASE MC GUIRE DIX LAKEHURST) (KWRI)

ILS or LOC RWY 6