

WRIGHTSTOWN, NEW JERSEY

ILS or LOC RWY 24

LOC I-JTQ 110.1	APCH CRS 238°	Rwy Idg 10,014	TDZE 117	Arpt Elev 141
--------------------	------------------	-------------------	-------------	------------------

AL-150 (USAF)
MC GUIRE FIELD (JOINT BASE MC GUIRE DIX LAKEHURST) (KWRI)

<p>V * When ALS inop, increase RVR to 40, vis to 3/4 mile. +RVR 18 authorized with use of FD or AP or HUD to DA. ** When ALS inop, increase CAT AB RVR to 55, vis to 1 mile, CAT CDE vis to 1 3/8 miles. *** Circling NA SE of Rwy 24 and E of Rwy 36 when R-5001 A/B Active.</p>	<p>ALS-F-1 </p>	<p>MISSED APPROACH: Climb to 2000 via GXU R-236 to CISON and hold.</p>
--	---------------------	--

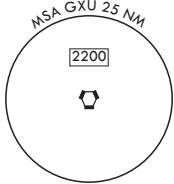
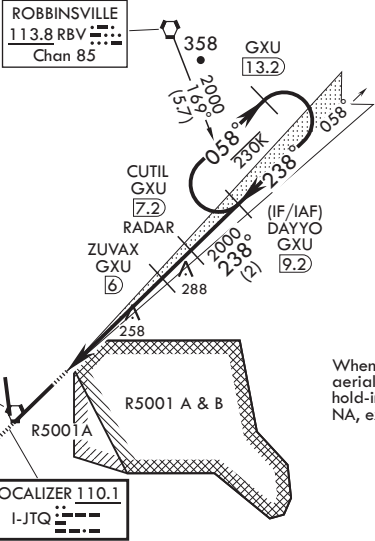
ATIS 110.6 270.1	MC GUIRE APP CON/DEP CON 126.475 363.8	TOWER 118.65 255.6	GND CON 121.8 275.8	CLNC DEL 135.2 335.8	PAR
---------------------	---	-----------------------	------------------------	-------------------------	-----

RADAR or DME required to identify the FAF.

RADAR required when R-5001 is active.

RADAR required for holding above 2000 and/or > 230 KIAS.

If RADAR inoperative, expect 15 min delay for deactivation of R-5001.



EMERG SAFE ALT 100 NM 5100 FROM GXU VORTAC

<p>2000 GXU R-236</p>	<p>CISON GXU 7.9</p>	<p>VGSI and ILS glidepath not coincident (VGSI Angle 3.00/TCH 76).</p>	<p>CUTIL 7.2 RADAR</p>	<p>DAYYO 9.2</p>	<p>ELEV 141</p>	<p>TDZE 117</p>
<p>VORTAC</p>	<p>KETPE 2</p>	<p>ZUVAX 6</p>	<p>058°</p>	<p>2000</p>	<p>BCN 306</p>	<p>109</p>
<p>0.6</p>	<p>4 NM</p>	<p>1.2 NM</p>	<p>238°</p>	<p>2000</p>	<p>7126 x 1.50</p>	<p>238°</p>
<p>GS 3.00°</p>	<p>TCH 49</p>	<p>1600</p>	<p>2000</p>	<p>2000</p>	<p>TWR 228</p>	<p>109</p>
<p>CATEGORY</p>	<p>A</p>	<p>B</p>	<p>C</p>	<p>D</p>	<p>E</p>	<p>HIRL all Rwys REIL Rwys 18, 36 TDZL/CL Rwy 6</p>
<p>S-ILS 24*</p>	<p>317/24</p>	<p>200</p>	<p>(200-1/2)</p>	<p>200</p>	<p>(200-1/2)</p>	
<p>S-LOC 24**</p>	<p>580/24 463 (500-1/2)</p>	<p>580/50</p>	<p>463</p>	<p>(500-1)</p>	<p>(500-1)</p>	
<p>CIRCLING***</p>	<p>680-1 539 (600-1)</p>	<p>700-1 559 (600-1 1/2)</p>	<p>700-2 559 (600-2)</p>	<p>1200-3 1059 (1100-3)</p>	<p>1200-3 1059 (1100-3)</p>	
<p>FAF to MAP 5.2 NM</p>						
<p>Knots 60 90 120 150 180</p>						
<p>Min:Sec 5:12 3:28 2:36 2:05 1:44</p>						

WRIGHTSTOWN, NEW JERSEY

MC GUIRE FIELD (JOINT BASE MC GUIRE DIX LAKEHURST) (KWRI)

Amdt 6 18MAY23

40°01'N - 74°36'W

ILS or LOC RWY 24

NE-2, 10 JUL 2025 to 07 AUG 2025

NE-2, 10 JUL 2025 to 07 AUG 2025