

ILS RWY 6 (CAT II)

MC GUIRE FLD,

(JOINT BASE MC GUIRE DIX LAKEHURST) (KWRI)

LOC I-WRI <b>110.1</b>	APCH CRS <b>058°</b>	Rwy Idg <b>10,014</b> TDZE <b>131</b> Arpt Elev <b>141</b>
---------------------------	-------------------------	--

AL-150 [USAF]

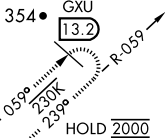
RADAR or DME required to identify the FAF.

ALS-F-2

MISSED APPROACH: Climb to 2000 via GXU R-059 to DAYYO and hold. Alternate Missed Approach instructions: Climb to 2000 via GXU R-059 to DAYYO, expect further clearance from ATC.

ATIS <b>110.6 270.1</b>	MC GUIRE APP CON/DEP CON <b>126.475 363.8</b>	MC GUIRE TOWER <b>118.65 255.6</b>	GND CON <b>121.8 275.8</b>	CLNC DEL <b>135.2 335.8</b>	PAR
----------------------------	--	---------------------------------------	-------------------------------	--------------------------------	-----

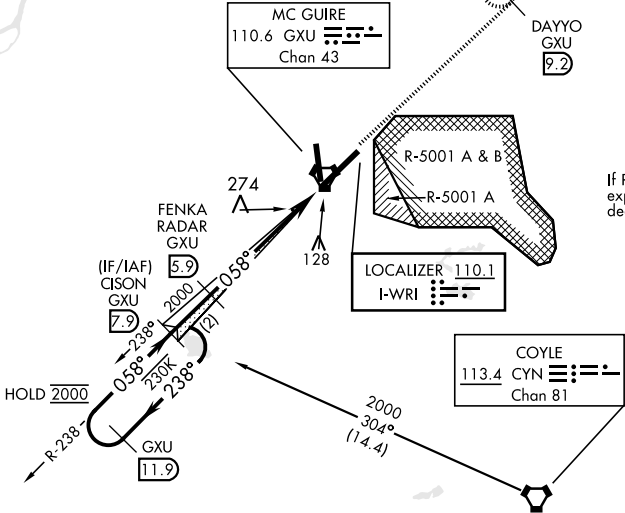
CATEGORY II ILS - SPECIAL  
AIRCREW & AIRCRAFT  
CERTIFICATION REQUIRED



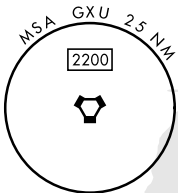
Missed Approach holding at DAYYO NA when R-5001 is active with aerial gunnery.

RADAR REQUIRED  
WHEN R-5001  
IS ACTIVE

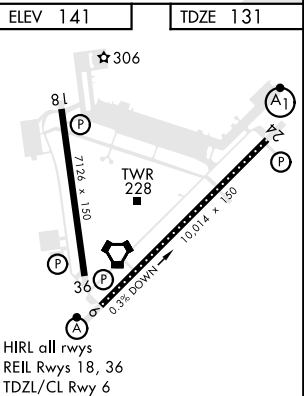
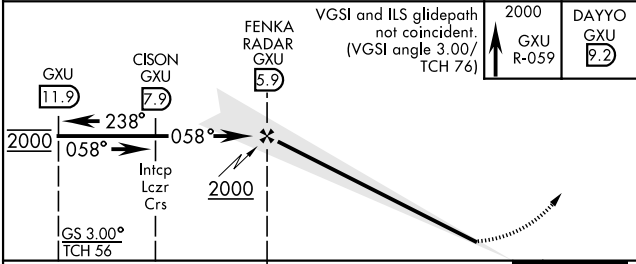
If RADAR inoperative,  
expect 15 min delay for  
deactivation of R-5001.



RADAR required for holding  
above 2000 and/or > than 230 KIAS.



EMERG SAFE ALT 100 NM 5100 FROM GXU VORTAC



CATEGORY	A	B	C	D	E
S-ILS 6	RA 91/12	100	DA 231		

ILS RWY 6 (CAT II)