

WAAS CH 78234 W22A	APP CRS 224°	Rwy Ldg 6404 TDZE 7023 Apt Elev 7038
--	------------------------	---

RNAV (GPS) RWY 22

FORT BRIDGER (FBR)

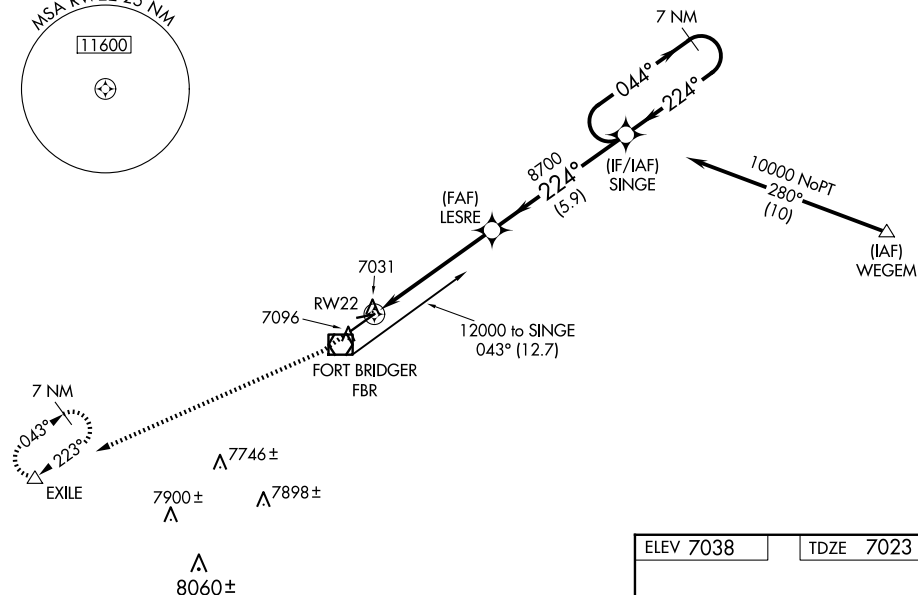
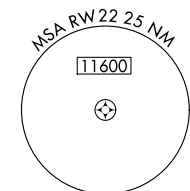
RNP APCH




T Circling NA to Rwy's 7 and 25. When local altimeter setting not received, use Evanston altimeter setting and increase all MDAs 100 feet, increase LNAV Cats C and D visibility $\frac{1}{8}$ SM, Circling Cat C visibility $\frac{1}{4}$ SM and Cat D visibility $\frac{1}{2}$ SM.

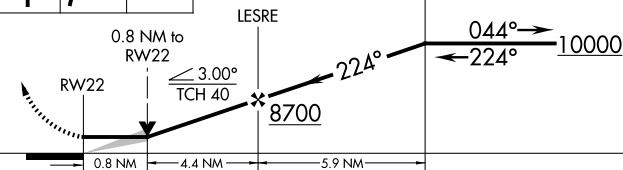
MISSED APPROACH: Climb to 7500, then climbing right turn to 12000 direct EXILE and hold, continue climb-in-hold to 12000.


AWOS-3PT
118.8

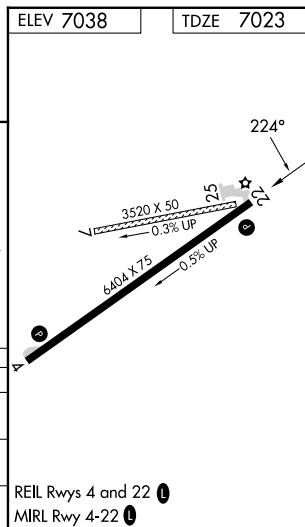
SALT LAKE CENTER
124.35 353.5

UNICOM
122.8 (CTAF) **L**

7500	12000	EXILE
		



CATEGORY	A	B	C	D
LP MDA	7300-1 277 (300-1)			
LNAV MDA	7340-1 317 (400-1)			
 CIRCLING	7400-1 362 (400-1)	7500-1 462 (500-1)	7660-1¾ 622 (700-1¾)	7680-2 642 (700-2)



FORT BRIDGER, WYOMING
Amdt 1B 10OCT19

41°24'N-110°24'W

FORT BRIDGER (FBR)
RNAV (GPS) RWY 22

NW-1, 10 JUL 2025 to 07 AUG 2025

NW-1, 10 JUL 2025 to 07 AUG 2025