

FORT LIBERTY, NORTH CAROLINA

RNAV (GPS) RWY 23

WAAS Chan 52202 W23A	APCH CRS 228°	Rwy Idg 7501 TDZE 200 Arprt Elev 225
--	-------------------------	---

[USAF]

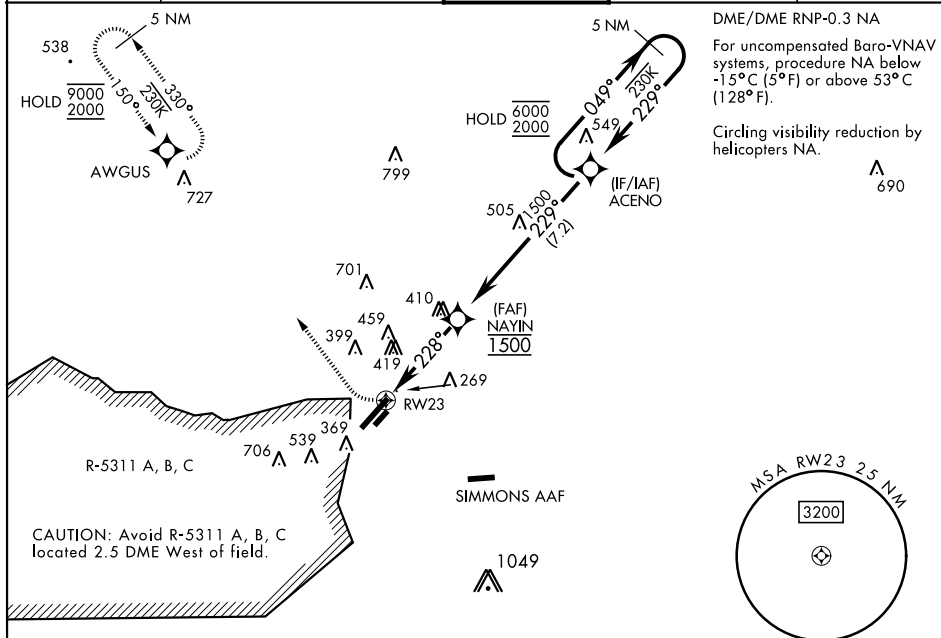
POPE AAF (KPOB)

RADAR required

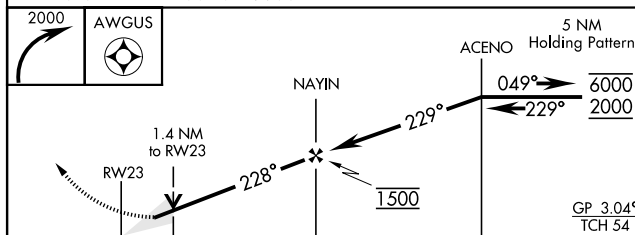


MISSED APPROACH: Climbing right turn to 2000 direct AWGUS and hold.

ATIS		FAYETTEVILLE APP CON		TOWER		GND CON		CLNC DEL	
132.3	353.725	125.175	285.575 (271° - 090°)	135.025	291.1	124.55	275.8	124.55	275.8
		133.0	290.25 (091° - 270°)						



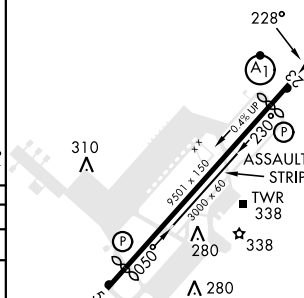
EMERG SAFE ALT 100 NM 5300



CATEGORY	A	B	C	D
LPV *	400/24	200	(200-½)	
LNNAV/ ** VNAV DA	572/40	372	(400-¾)	
LNNAV MDA ***	720/24 520 (600-½)	720/55 520 (600-1)		
**** C CIRCLING	760-1 542 (600-1)	920-2 702 (800-2)	1060-2¾ 842 (900-2¾)	

ELEV	225		TDZE	200
------	-----	--	------	-----

Rwy 05	ldg 7501'
Rwy 23	ldg 7501'



HIRL Rwy 5-23
LIRL Rwy 050°-230°
REIL Rwy 5

FORT LIBERTY, NORTH CAROLINA

35°10'N-79°01'W

POPE AAF (KPOB)

Amdt 8 11JUL24

RNAV (GPS) RWY 23

SE-2, 10 JUL 2025 to 07 AUG 2025

SE-2, 10 JUL 2025 to 07 AUG 2025