

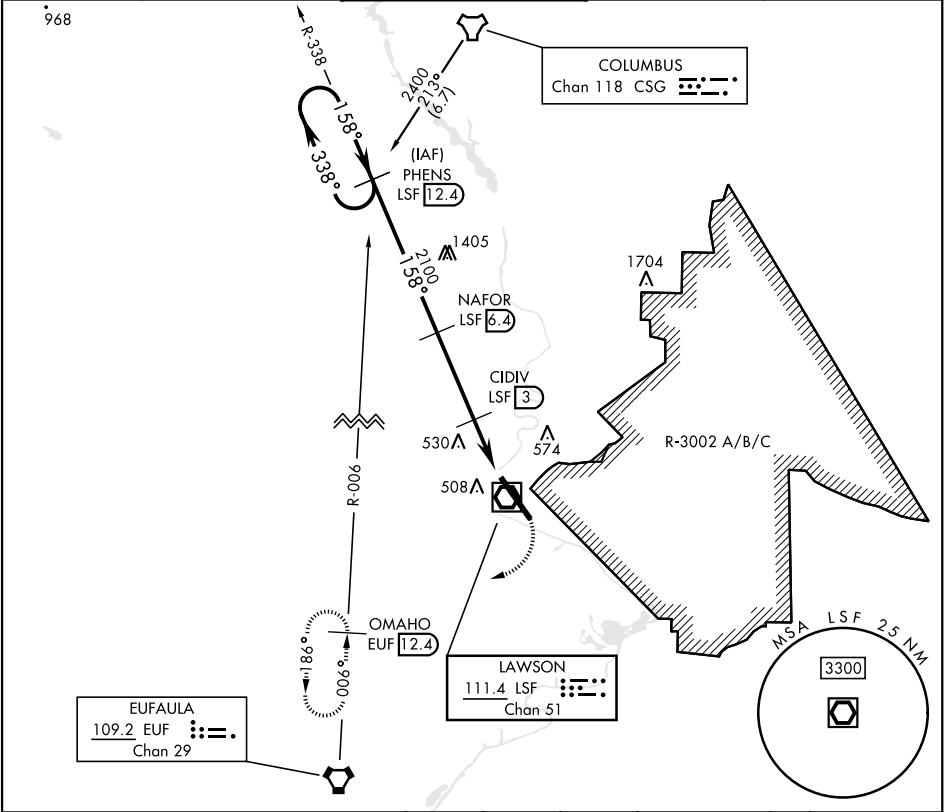
VOR/DME RWY 15

VOR/DME LSF <b>111.4</b> Chan <b>51</b>	APCH CRS <b>158°</b>	Rwy Idg <b>10,002</b> TDZE <b>227</b> Arpt Elev <b>227</b>
---	-------------------------	--

[USA]

LAWSON AAF (KLSF)

* Circling not authorized E of Rwy 15-33.		MISSED APPROACH: Climbing right turn to 2400 via heading 240° and EUF VORTAC R-006 to OMAHO INT/EUF 12.4 DME and hold.	
ATIS★ <b>134.375</b>	ATLANTA APP CON <b>125.5 323.1</b>	TOWER★ <b>119.05</b> (CTAF) <b>0 269.525</b>	GND CON <b>121.7 254.25</b>
		CLNC DEL <b>121.7 251.15</b>	



One Minute Holding Pattern PHENS LSF 12.4		VGSI and descent angles not coincident.		2400	hdg 240°	EUF R-006	OMAHO EUF 12.4	ELEV 227	TDZE 227
2400		2100		1000		LSF 0.7		158°	
338°		158°		3.00°		TCH 45		380	
158°		158°		3.4 NM		2.3 NM		330	
CATEGORY		A		B		C		D	
S-15		820/50		594 (600-1)		820-1½		820-1¾	
						594 (600-1½)		594 (600-1¾)	
CIRCLING*		820-1		593 (600-1)		840-1¾		880-2	
						613 (700-1¾)		653 (700-2)	

VOR/DME RWY 15

SE-4, 10 JUL 2025 to 07 AUG 2025