

RNAV (GPS) RWY 15

WAAS CH 41028 W15A	APCH CRS 150°	Rwy Idg 10,002 TDZE 227 Arpt Elev 227
--	-------------------------	--

[USA]

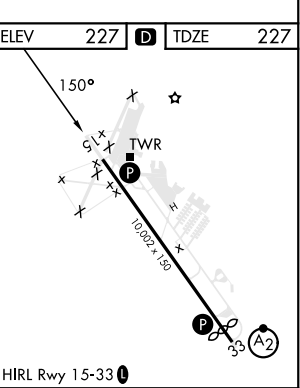
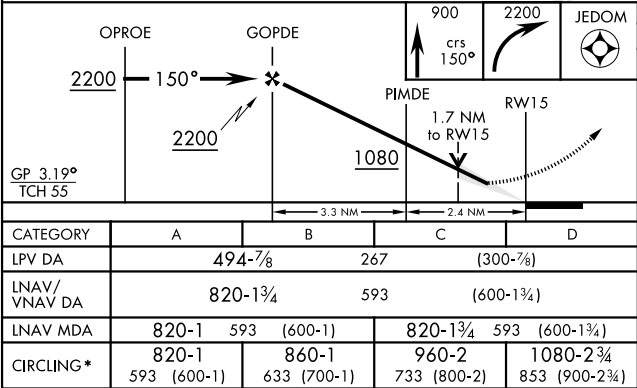
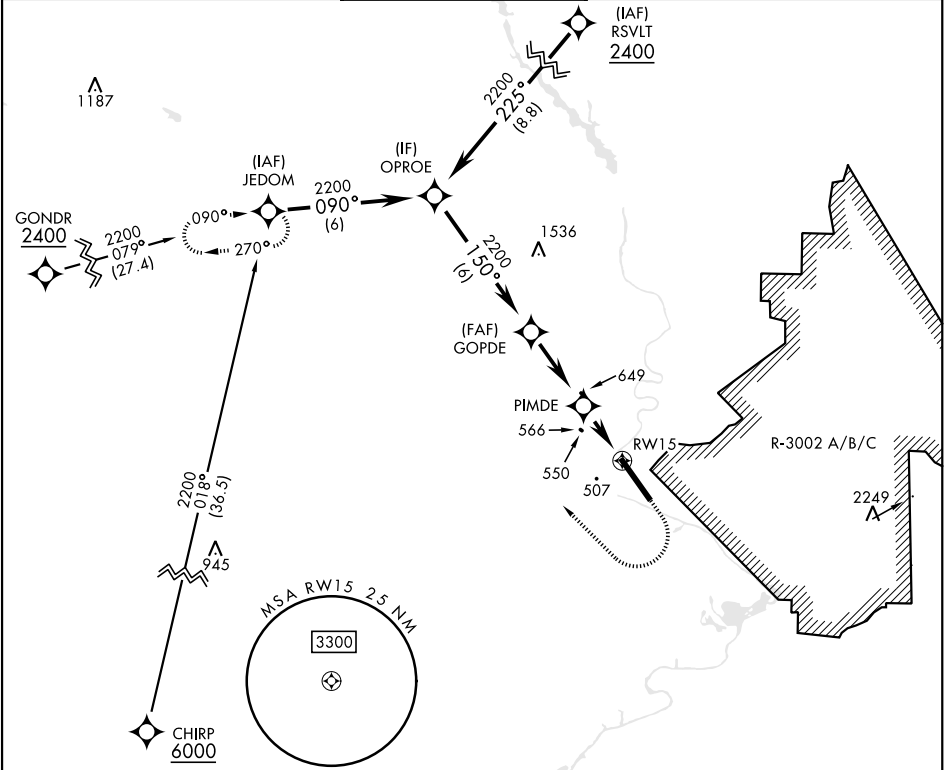
LAWSON AAF (KLSF)

RNP APCH - GPS

★ Circling not authorized NE of Rwy 15-33.
Not authorized when tower closed.
For uncompensated Baro-VNAV systems, LNAV/VNAV below -15°C or above 54°C.

MISSED APPROACH: Climb to 900 then
climbing right turn to 2200 direct JEDOM
and hold.

ATIS★ 134.375	ATLANTA APP CON 125.5 323.1	TOWER★ 119.05 (CTAF) 269.525	GND CON 121.7 254.25	CLNC DEL 121.7 251.15
-------------------------	---------------------------------------	--	--------------------------------	---------------------------------



RNAV (GPS) RWY 15

SE-4, 10 JUL 2025 to 07 AUG 2025

SE-4, 10 JUL 2025 to 07 AUG 2025