

VORTAC FLO 115.2 Chan 99	APP CRS 232°	Rwy Idg TDZE Apt Elev	N/A N/A 147
--	------------------------	-----------------------------	--

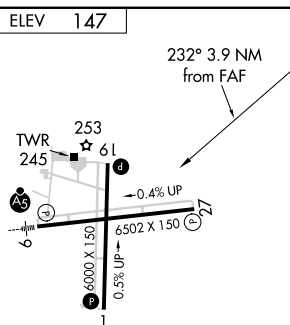
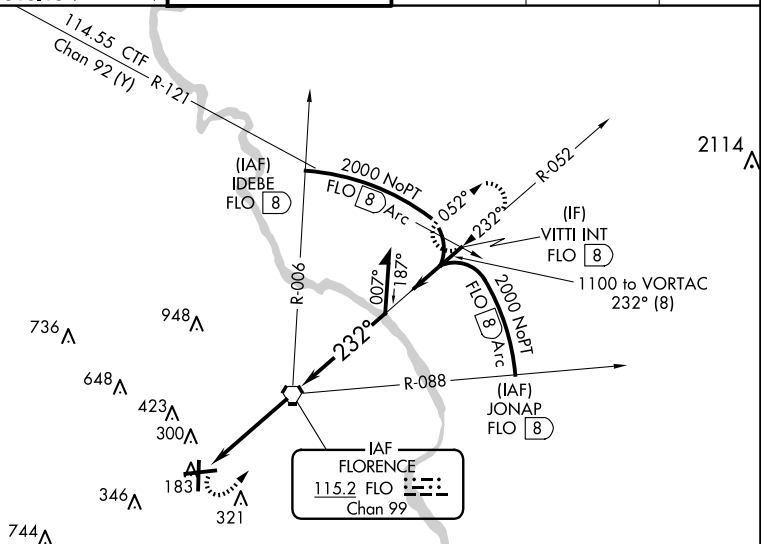
VOR or TACAN-A

FLORENCE RGNL (FLO)

- T** When local altimeter setting not received, use Darlington altimeter setting:
A increase all MDA 60 feet and visibility Circling Cat C and D $\frac{1}{4}$ SM.
 Helicopter visibility reduction below 1 SM NA.
 Night Landing: Rwy 1, 19 NA.

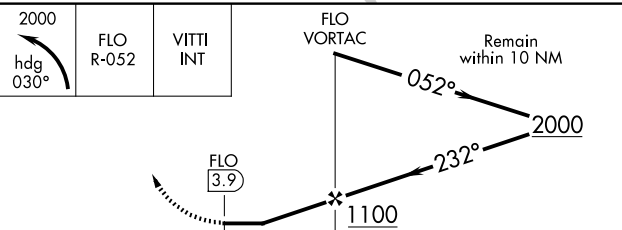
MISSED APPROACH: Climbing left turn to 2000 via heading 030° and FLO VORTAC R-052 to VITTI INT/FLO 8 DME and hold.

ATIS 123.625	FLORENCE APP CON ★ 118.6 341.7 (256°-074°) 135.25 316.15 (075°-255°)	FLORENCE TOWER ★ 125.1 (CTAF) 0 353.85	GND CON 121.9 353.85	CLNC DEL 121.9 353.85	UNICOM 122.95
-----------------	--	---	-------------------------	--------------------------	------------------



REIL Rwy 1, 19 and 27 **L**
HRL Rwy 9-27 **I**

FAF to MAP 3.9 NM					
Knots	60	90	120	150	180
Min:Sec	3:54	2:36	1:57	1:34	1:18

<div><div>2000</div><div></div></div>		FLO R-052	VITTI INT	
		FLO 3.9		
		3.9 NM		
CATEGORY	A	B	C	D
CIRCLING	640-1 493 (500-1)	660-1 513 (600-1)	900-2 $\frac{1}{4}$ 753 (800-2 $\frac{1}{4}$)	900-2 $\frac{1}{2}$ 753 (800-2 $\frac{1}{2}$)