

VOR/DME FAR	APP CRS	Rwy Idg
116.2	360°	9001
Chan 109		TDZE 899
		Apt Elev 901

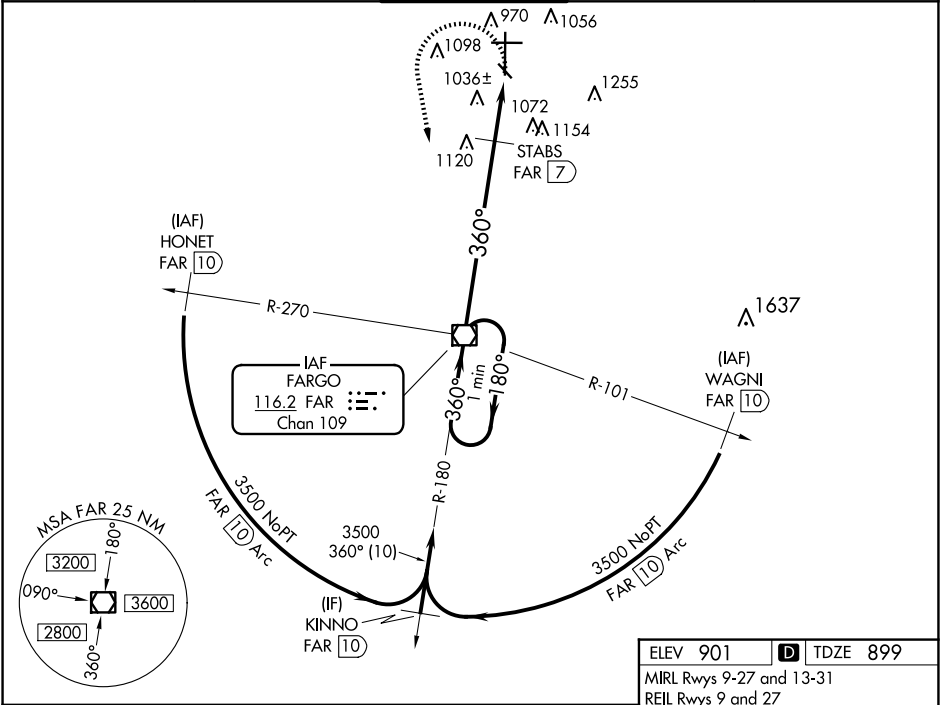
VOR RWY 36
HECTOR INTL (FAR)

For inop MALSRS, increase S-36 Cat E visibility to 2½ miles. STABS Fix Minimums: For inop MALSRS, increase S-36 Cat E visibility to 1¾ mile.

MALSRS

MISSED APPROACH: Climbing left turn to 3500 direct FAR VOR/DME and hold.

ATIS 124.5 379.2	FARGO APP CON 120.4 377.15	FARGO TOWER 133.8 290.4	GND CON 121.9 348.6	CLNC DEL 121.9 348.6
----------------------------	--------------------------------------	-----------------------------------	-------------------------------	--------------------------------



One Minute Holding Pattern				
FAR VOR/DME				
3500 ← 180° → 360° →				
360° → 3500 FAR				
STABS FAR (7)				
FAR 8.1, FAR 9.4				
1600				
7 NM, 1.1 NM, 1.3 NM				
CATEGORY	A	B	C	D
S-36	1600/24	701 (700-½)	1600-1½ 701 (700-1½)	1600-1¾ 701 (700-1¾)
CIRCLING	1600-1	699 (700-1)	1600-2 699 (700-2)	1620-2¼ 719 (700-2¼)
STABS FIX MINIMUMS				
S-36	1380/24	481 (500-½)	1380/40 481 (500-1)	1380/50 481 (500-1½)
CIRCLING	1380-1	479 (500-1)	1520-1¾ 619 (700-1¾)	1620-2¼ 719 (800-2¼)

ELEV 901

TDZE 899

MIRL Rwy 9-27 and 13-31
REIL Rwy 9 and 27
HIRL Rwy 18-36 81

FAR TO MAP 9.4 NM

Knots	60	90	120	150	180
Min:Sec	9:24	6:16	4:42	3:46	3:08

NC-1, 10 JUL 2025 to 07 AUG 2025

NC-1, 10 JUL 2025 to 07 AUG 2025