

FALLON, NEVADA

TACAN Y RWY 13R

TACAN NFL Chan <b>82</b>	APCH CRS <b>141°</b>	Rwy Idg <b>14,001</b> TDZE <b>3935</b> Arpt Elev <b>3935</b>
-----------------------------	-------------------------	--

[USN]

FALLON NAS (VAN VOORHIS FLD) (KNFL)

**MISSED APPROACH:** Climb direct NFL TACAN, then climbing left turn to 10,500. Intercept NFL R-117 outbound to MUFIT and hold. Continue climb-in-hold to 10,500.

ATIS ★ 370.925	NAVY FALLON APP CON 120.85 360.2	NAVY FALLON TOWER★ 119.25 340.2	GND CON 251.15	CLNC DEL 353.55	ASR/PAR
-------------------	-------------------------------------	------------------------------------	-------------------	--------------------	---------

Knots	60	120	180	240	300	360
V/V(fpm)	205	410	615	820	1025	1230


\*Min climb of 205 ft/NM to 8600 - Controlling Obstacle Unk

**CAUTION:**  
Fallon Muni Airport  
(uncontrolled) 5 NM NW  
PATTERN alt 800' AGL

CAUTION:  
RCL 91' from FAC at 3000'  
from threshold.

LOVELOCK  
116.5 LLC  .  
Chan 112

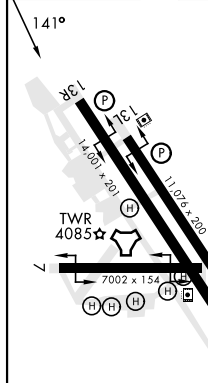
10,200  
051  
(27.3)

HAZEN  
114.1 HZN   
Chan 88

FALLON  
Chan 82 NFL

EMERG SAFE ALT 100 NM 15,600

ELEV	3935	TDZE	3935
------	------	------	------



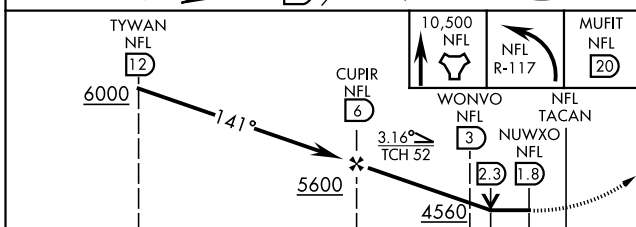
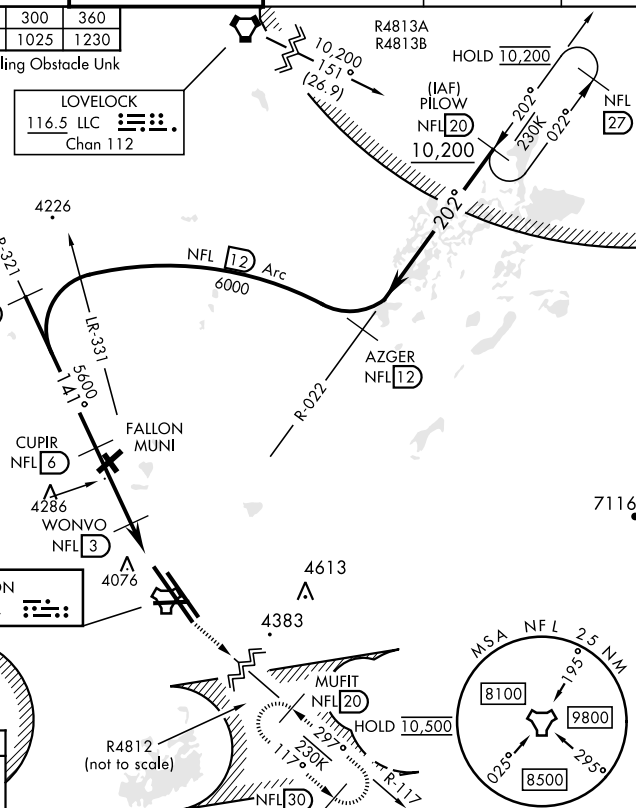
H|RL all rwys


FALLON, NEVADA

Amdt 3 19MAY22

39°25'N-118°42'W FALLON NAS (VAN VOORHIS FLD) (KNFL)

TACAN Y RWY 13R



CATEGORY	A	B	C	D
S-13R *	4340-1	405 (500-1)	4340-1 $\frac{1}{8}$	405 (500-1 $\frac{1}{8}$ )
S-13R	4440-1	505 (600-1)	4440-1 $\frac{3}{8}$	505 (600-1 $\frac{3}{8}$ )
 CIRCLING	4400-1	465 (500-1)	4700-2 $\frac{1}{4}$ 765 (800-2 $\frac{1}{4}$ )	4920-3 985 (1000-3)

SW-4, 10 JUL 2025 to 07 AUG 2025