

FALLON, NEVADA

RNAV (GPS) RWY 31L

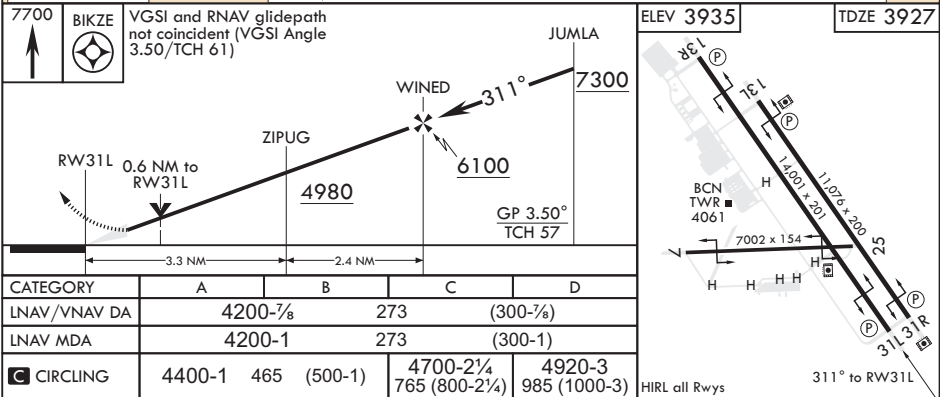
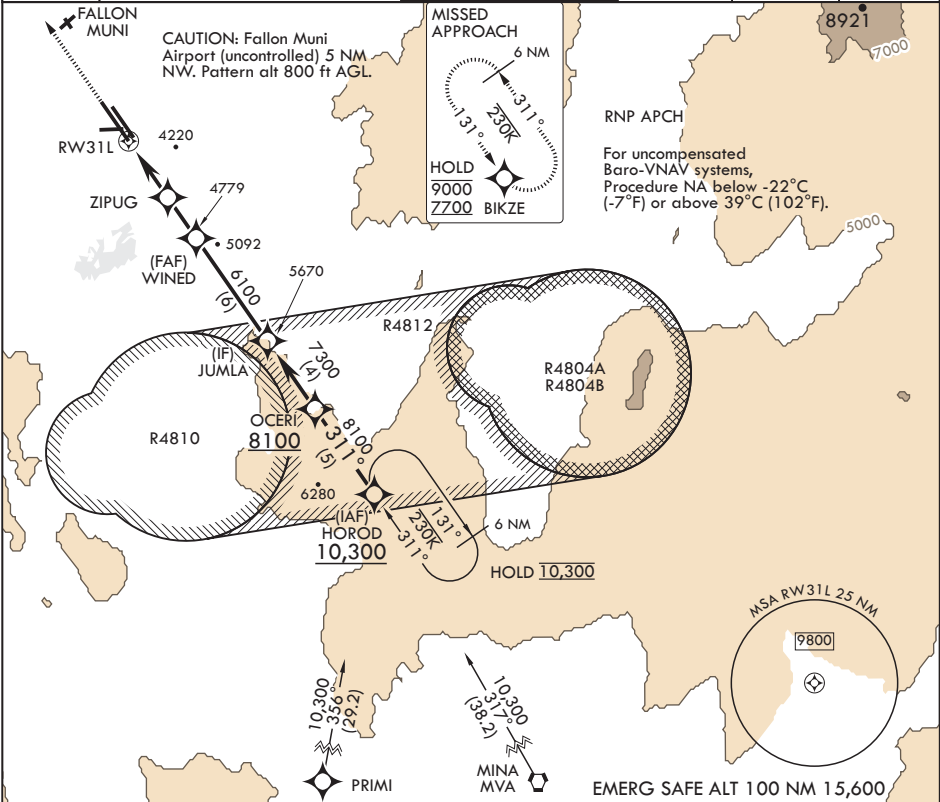
APCH CRS	Rwy Idg	14,001
311°	TDZE	3927
	Arprt Elev	3935

AL-143 (USN)

FALLON NAS (VAN VOORHIS FLD) (KNFL)

MISSED APPROACH: Climb to 7700 direct BIKZE and hold, continue climb-in-hold to 7700.	
---	--

ATIS★	NAVY FALLON APP CON/DEP CON	NAVY FALLON TOWER★	GND CON	CLNC DEL	ASR/PAR
370.925	120.85 360.2	119.25 340.2	251.15	353.55	



FALLON, NEVADA

39°25'N - 118°42'W

FALLON NAS (VAN VOORHIS FLD) (KNFL)

Amdt 3 24MAR22

RNAV (GPS) RWY 31L

SW-4, 10 JUL 2025 to 07 AUG 2025

SW-4, 10 JUL 2025 to 07 AUG 2025