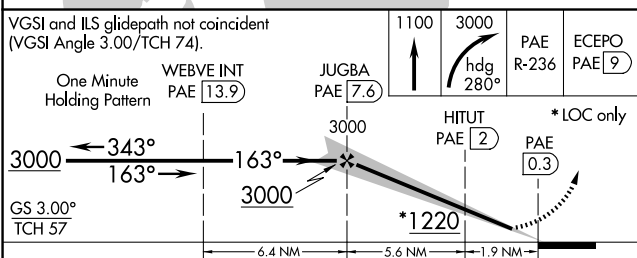
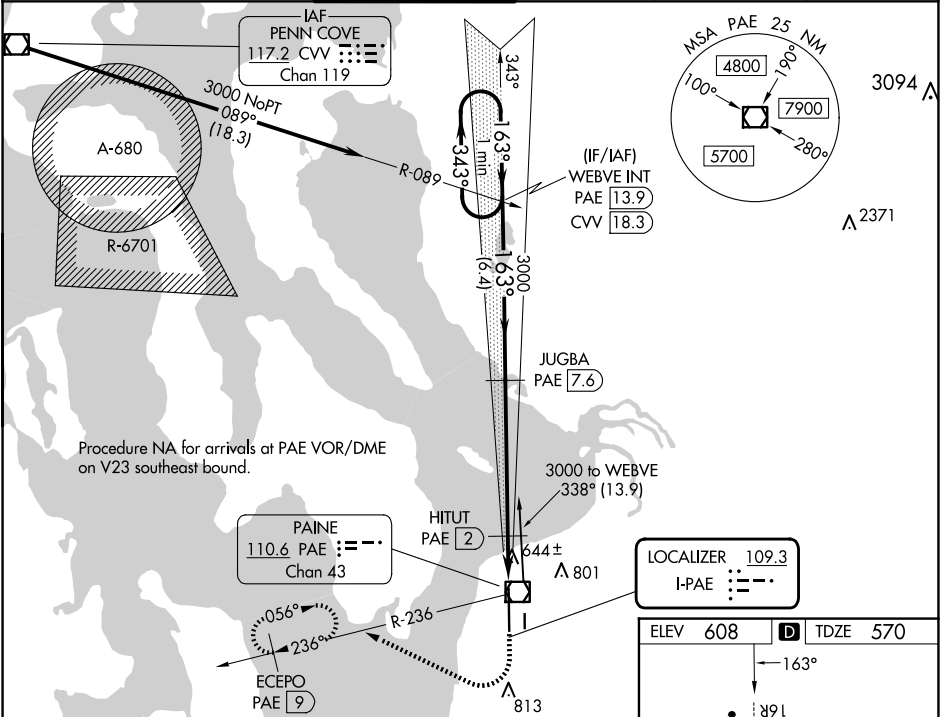


LOC I-PAE 109.3	APP CRS 163°	Rwy Idg TDZE Apt Elev	9010 570 608
---------------------------	------------------------	-----------------------------	---

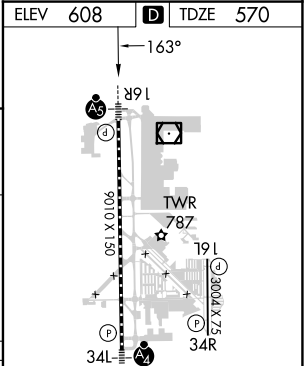
ILS Z or LOC Z RWY 16R
SEATTLE PAINE FLD INTL (PAE)

<p>⚠ Circling Rwy 34R NA at night. DME required. For inop ALS, increase S-LOC 16R Cats C/D visibility to RVR 5500. DME from PAE VOR/DME. Simultaneous reception of I-PAE and PAE DME required.</p>	<p>MALSR A5</p>	<p>MISSED APPROACH: Climb to 1100 then climbing right turn to 3000 on heading 280° and PAE VOR/DME R-236 to ECEPO/PAE 9 DME and hold, continue climb-in-hold to 3000.</p>
---	-----------------------------------	--

ATIS 128.65	SEATTLE APP CON 128.5 306.9	PAINE TOWER ★ 132.95 (CTAF) 0 256.7	GND CON 121.8 339.8	CLNC DEL 127.175	UNICOM 122.95
-----------------------	---------------------------------------	---	-------------------------------	----------------------------	-------------------------



CATEGORY	A	B	C	D
S-ILS 16R	770/18 200 (200-½)			
S-LOC 16R	940/24 370 (400-½)		940/35 370 (400-¾)	
C CIRCLING	1100-1 492 (500-1)		1120-1½ 512 (600-1½)	
			1160-2 552 (600-2)	



TDZ/CL Rwy 16R
HIRL Rwy 16R-34L
REIL Rws 16L and 34R
MIRL Rwy 16L-34R

NW-1, 10 JUL 2025 to 07 AUG 2025

NW-1, 10 JUL 2025 to 07 AUG 2025