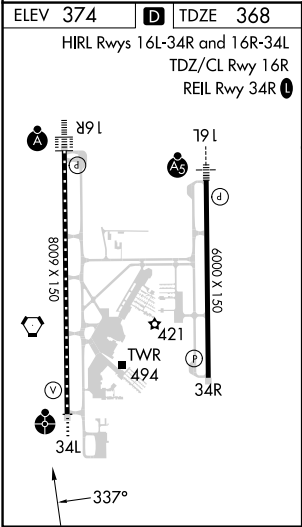
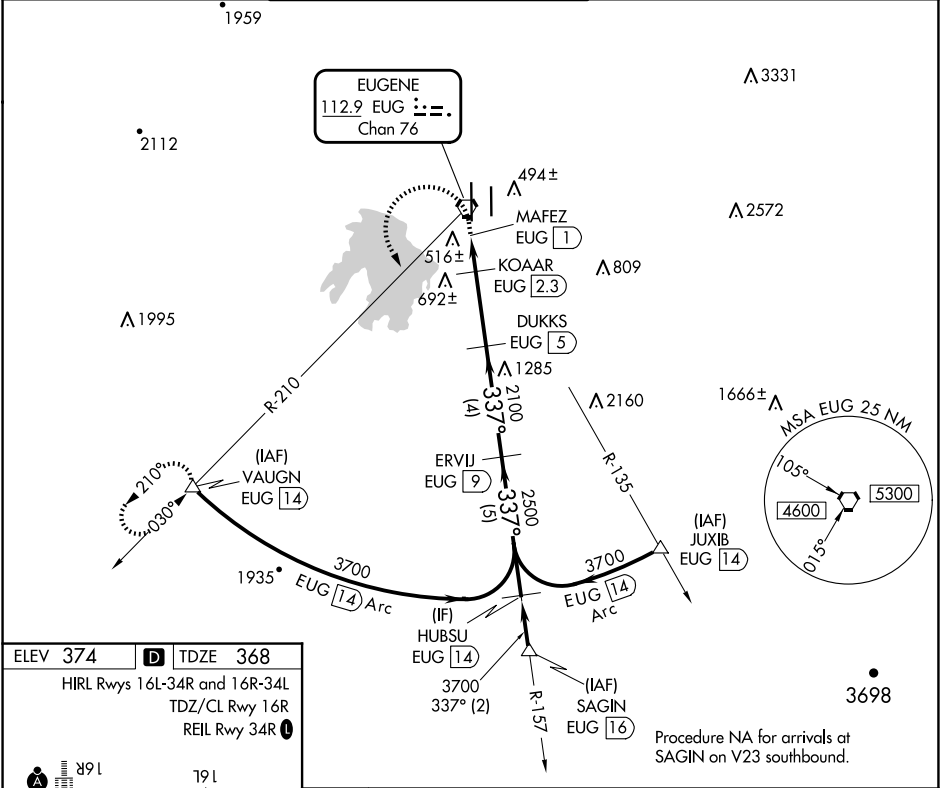


VORTAC EUG	APP CRS	Rwy Idg	8009
<b>112.9</b>	<b>337°</b>	TDZE	<b>368</b>
Chan <b>76</b>		Apt Elev	<b>374</b>

VOR or TACAN RWY 34L  
MAHLON SWEET FLD (EUG)

DME required for procedure entry. DME required.		ODALS	MISSED APPROACH: Climb to 800 then climbing left turn to 4100 on EUG VORTAC R-210 to VAUGN/EUG 14 DME and hold, continue climb-in-hold to 4100.		
ATIS	CASCADE APP CON★	EUGENE TOWER★	GND CON	CLNC DEL	UNICOM
<b>125.225</b>	<b>119.6 348.7</b>	<b>118.9</b> (CTAF) <b>371.9</b> (Rwy 16R/34L) <b>124.15 371.9</b> (Rwy 16L/34R)	<b>121.7 269.5</b>	<b>121.7 269.5</b>	<b>122.95</b>



800	4100	VAUGN	VGSI and descent angles not coincident (VGSI Angle 3.00/TCH 53).		HUBSU EUG 14
EUG R-210					ERVIJ EUG 9
EUG VORTAC	MAFEZ EUG 1	KOAR EUG 2.3	DUKKS EUG 5		
			3.49° TCH 53		
			1100	2100	2500
	0.5	0.6	0.7	2.7 NM	4 NM
CATEGORY	A	B	C	D	
S-34L	780/40	412 (500-¾)	780/55	412 (500-1)	
CIRCLING	820-1 446 (500-1)	840-1 466 (500-1)	1000-1¾ 626 (700-1¾)	1140-2½ 766 (800-2½)	

NW-1, 10 JUL 2025 to 07 AUG 2025

NW-1, 10 JUL 2025 to 07 AUG 2025