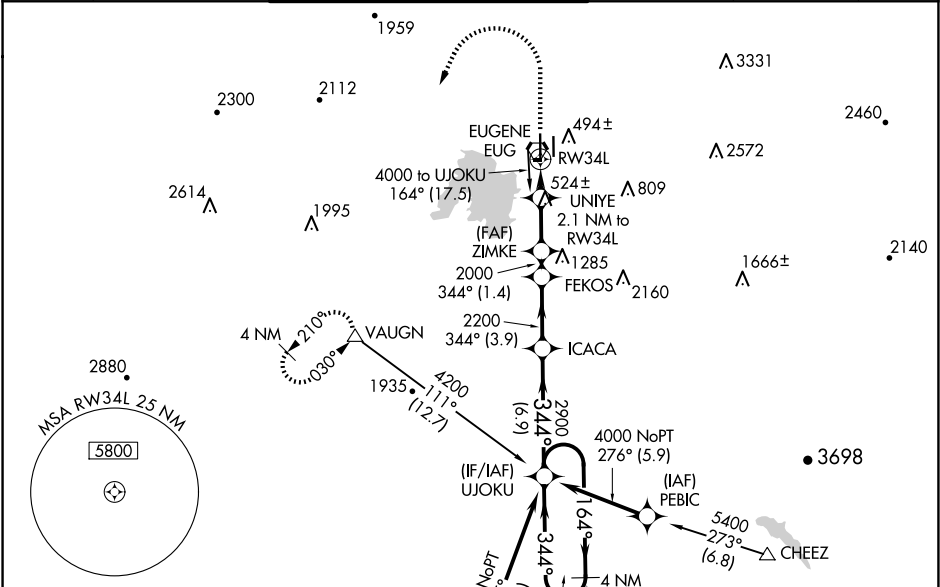


WAAS CH <b>45600</b> <b>W34A</b>	APP CRS <b>344°</b>	Rwy Idg TDZE <b>368</b> Apt Elev <b>374</b>
--	------------------------	---

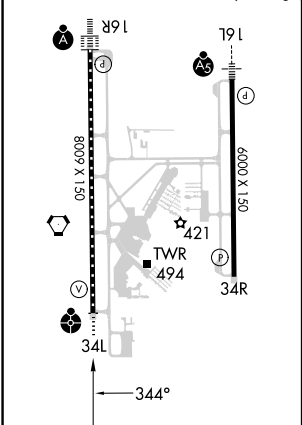
RNAV (GPS) Y RWY 34L  
MAHLON SWEET FLD (EUG)

RNP APCH.	ODALS	MISSED APPROACH: Climb to 1500, then climbing left turn to 4000 direct VAUGN and hold.
Simultaneous approach authorized. LNAV procedure NA during simultaneous operations. Use of FD or AP providing RNAV track guidance required during simultaneous operations. For uncompensated Baro-VNAV systems, LNAV/VNAV NA below -10°C or above 54°C. For inop ALS increase LNAV/VNAV visibility Cats A-B to RVR 4500. Inop table does not apply to LPV minimums.		

ATIS <b>125.225</b>	CASCADE APP CON★ <b>119.6 348.7</b>	EUGENE TOWER★ <b>118.9</b> (CTAF) <b>371.9</b> (Rwy 16R/34L) <b>124.15 371.9</b> (Rwy 16L/34R)	GND CON <b>121.7 269.5</b>	CLNC DEL <b>121.7 269.5</b>	UNICOM <b>122.95</b>
------------------------	--	--	-------------------------------	--------------------------------	-------------------------



ELEV <b>374</b>	D	TDZE <b>368</b>
HIRL Rwy 16L-34R and 16R-34L TDZ/CL Rwy 16R REIL Rwy 34R		



1500	4000	VAUGN	UJOKU 4 NM Holding Pattern			
*LNAV only		UNIYE 2.1 NM to RW34L	FEKOS	ICACA	164° → 6000 ← 344° 4000	
*1.1 NM to RW34L		2000	2200	2900	GP 3.00° TCH 53	
1.1 NM		1 NM	2.9 NM	1.4 NM	3.9 NM	6.9 NM
CATEGORY	A	B	C	D		
LPV DA	568/40		200 (200-¾)			
LNAV/VNAV DA	657/40		289 (300-¾)			
LNAV MDA	760/40		392 (400-¾)		760/50 392 (400-1)	
CIRCLING	820-1 446 (500-1)	840-1 466 (500-1)	1000-1¾ 626 (700-1¾)		1140-2½ 766 (800-2½)	