

WAAS CH <b>86518</b> <b>W16B</b>	APP CRS <b>164°</b>	Rwy Idg TDZE <b>364</b> Apt Elev <b>374</b>	<b>8009</b>
--	------------------------	---	-------------

RNAV (GPS) Y RWY 16R

MAHLON SWEET FLD (EUG)

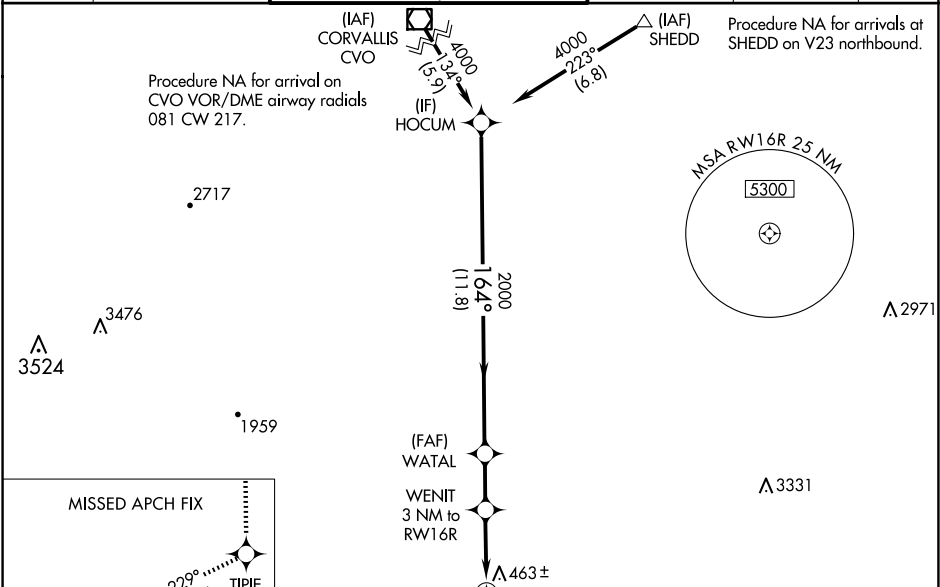
RNP APCH.

Simultaneous approach authorized. LNAV procedure NA during simultaneous operations. Use of FD or AP providing RNAV track guidance required during simultaneous operations. For uncompensated Baro-VNAV systems, LNAV/VNAV NA below -10°C or above 54°C. For inop ALS, increase LNAV/VNAV all Cats visibility to RVR 4500, increase LNAV Cat C/D visibility to RVR 5500.

ALSF-2

MISSED APPROACH: Climb to 5000 direct TIPIE and on track 229° to VAUGN and hold, continue climb-in-hold to 5000.

ATIS <b>125.225</b>	CASCADE APP CON★ <b>119.6 348.7</b>	EUGENE TOWER★ <b>118.9</b> (CTAF) <b>371.9</b> (Rwy 16R/34L) <b>124.15 371.9</b> (Rwy 16L/34R)	GND CON <b>121.7 269.5</b>	CLNC DEL <b>121.7 269.5</b>	UNICOM <b>122.95</b>
------------------------	--	--	-------------------------------	--------------------------------	-------------------------



HOCUM		WATL		WENIT		RWY 16R	
4000		2000		3000		5000	
164°		164°		229°		229°	
11.8 NM		2 NM		2 NM		1 NM	
GP 3.00° TCH 51		*1360		*1 NM to RWY 16R		*LNAV only	
CATEGORY	A	B	C	D			
LPV DA	564/18		200 (200-½)				
LNAV/VNAV DA	628/24		264 (300-½)				
LNAV MDA	720/24 356 (400-½)		720/30 356 (400-¾)				
CIRCLING	820-1 446 (500-1)		840-1 466 (500-1)		1000-1¾ 626 (700-1¾)		1140-2½ 766 (800-2½)

