

| | | | |
|--|------------------------|-----------------------------|---|
| WAAS CH 81827 W16A | APP CRS 164° | Rwy Idg TDZE Apt Elev | 6000 369 374 |
|--|------------------------|-----------------------------|---|

RNAV (GPS) Y RWY 16L

MAHLON SWEET FLD (EUG)

RNP APCH.

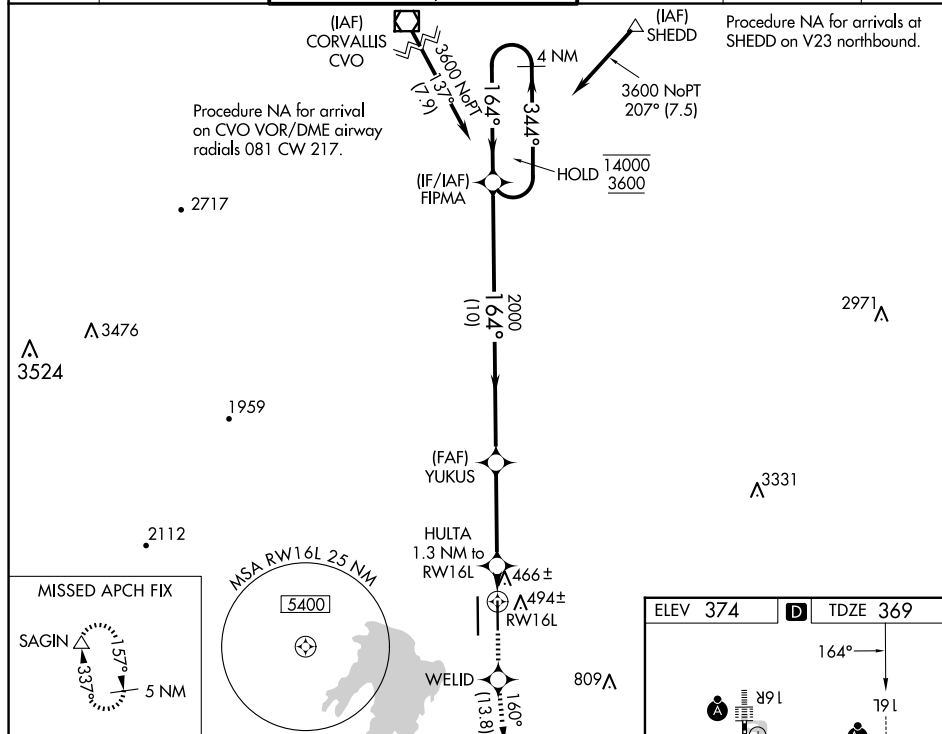
T Simultaneous approach authorized. LNAV procedure NA during simultaneous operations. Use of FD or AP providing RNAV track guidance required during simultaneous operations. For uncompensated Baro-VNAV systems, LNAV/VNAV NA below -10°C or above 54°C. For Inop ALS, increase LNAV/VNAV all Cats visibility to ½ SM, increase LNAV Cat C/D visibility to 1 SM.

MALSR

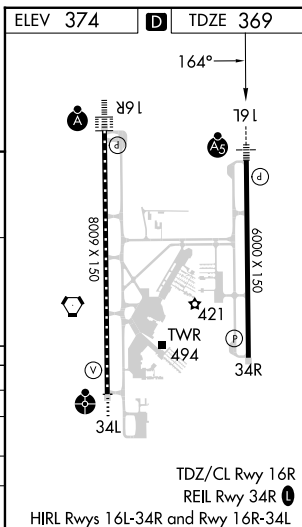


MISSED APPROACH: Climb to 5500 direct WEUD and on track 160° to SAGIN and hold, continue climb-in-hold to 5500.

| | | | | | |
|---------|------------------|--|-------------|-------------|--------|
| ATIS | CASCADE APP CON* | EUGENE TOWER * | GND CON | CLNC DEL | UNICOM |
| 125.225 | 119.6 348.7 | 118.9 (CTAF) 0 371.9 (Rwy 16R/34L) 124.15 371.9 (Rwy 16L/34R) | 121.7 269.5 | 121.7 269.5 | 122.95 |



| | | | | | | | | | | | | | |
|-------------------------|--|----------------------|--|----------------------|--|-------------------------|--|-----------------------------|--|--------------|--|--------------|--|
| 4 NM Holding Pattern | | FIPMA | | YUKUS 2000 | | 5500 ↑ | | WELID ✦ | | tr 160° △ | | SAGIN | |
| 14000 3600 | | ←344° 164°→ | | 164° | | 2000 | | HULTA 1.3 NM to RW16L | | *RNAV only | | RW16L | |
| GP 3.00° TCH 52 | | 10 NM | | 3.7 NM | | 1.3 NM | | *820 | | 820 | | 820 | |
| CATEGORY | | A | | B | | C | | D | | E | | F | |
| LPV DA | | 569-½ | | 200 (200-½) | | 200 (200-½) | | 200 (200-½) | | 200 (200-½) | | 200 (200-½) | |
| RNAV/DA VNAV | | 632-½ | | 263 (300-½) | | 263 (300-½) | | 263 (300-½) | | 263 (300-½) | | 263 (300-½) | |
| RNAV MDA | | 720-½ | | 351 (400-½) | | 720-½ | | 351 (400-½) | | 720-½ | | 351 (400-½) | |
| CIRCLING | | 820-1 446 (500-1) | | 840-1 466 (500-1) | | 1000-1¾ 626 (700-1¾) | | 1140-2½ 766 (800-2½) | | 1140-2½ | | 766 (800-2½) | |



RNAV (GPS) Y RWY 16L