
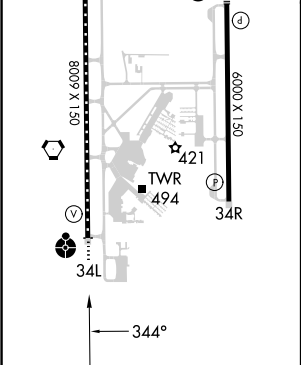
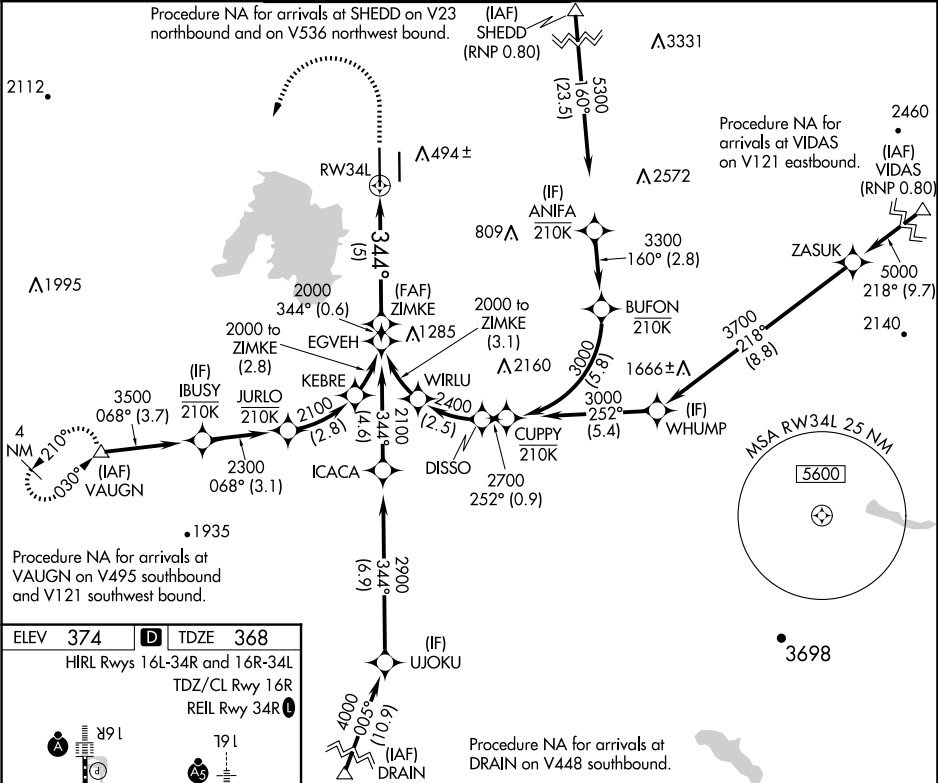


APP CRS	Rwy Idg	8009
344°	TDZE	368
	Apt Elev	374

RNAV (RNP) Z RWY 34L

MAHLON SWEET FLD (EUG)

RNP AR APCH - GPS.			ODALS 	MISSED APPROACH: Climb to 1500, then climbing left turn to 4000 direct VAUGN and hold.	
▼ Simultaneous approach authorized. For uncompensated Baro-VNAV systems, procedure NA below -6°C or above 54°C. For inop ALS, increase RNP 0.20 all Cats visibility to RVR 5500; increase RNP 0.30 Cats A, B visibility to RVR 6000.					
ATIS 125.225	CASCADE APP CON★ 119.6 348.7	EUGENE TOWER★ 118.9 (CTAF) 0 371.9 (Rwy 16R/34L) 124.15 371.9 (Rwy 16L/34R)	GND CON 121.7 269.5	CLNC DEL 121.7 269.5	UNICOM 122.95



<div>1500 ↑</div>		<div>4000 ↙</div>	<div>VAUGN △</div>	See planview for multiple IF locations.	ZIMKE
<div>RW34L</div>					<div>2000</div>
<div>↘ 344°</div>					<div>↖ 2000</div>
<div>5 NM</div>					<div>GP 3.00° TCH 53</div>
CATEGORY	A	B	C	D	
RNP 0.20 DA	720/45		352 (400-7%)		
RNP 0.30 DA	761/50		393 (400-1)		
AUTHORIZATION REQUIRED					