

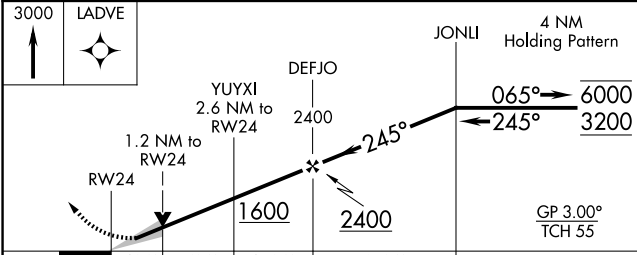
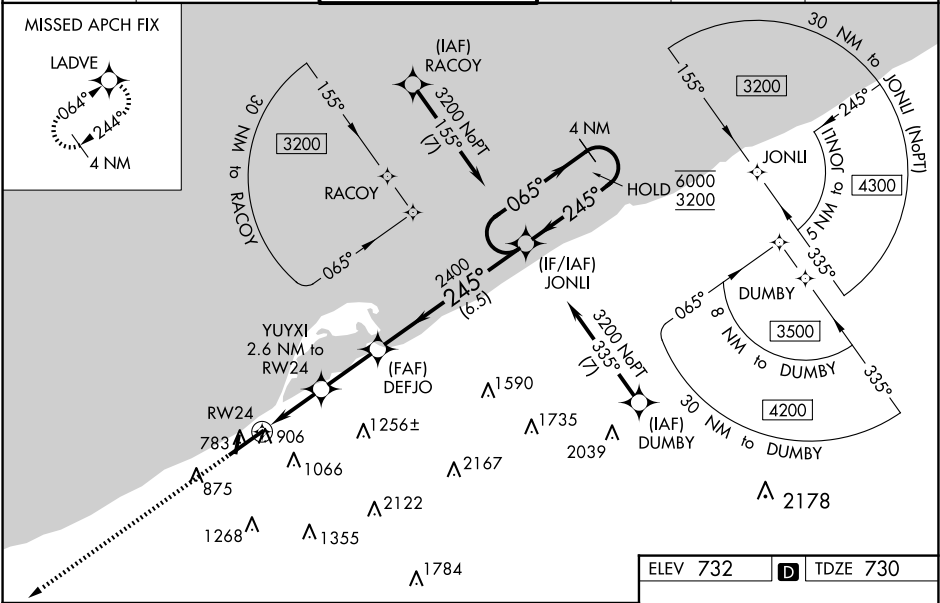


WAAS CH <b>86812</b> <b>W24A</b>	APP CRS <b>245°</b>	Rwy Ldg TDZE Apt Elev	<b>7500</b> <b>730</b> <b>732</b>
--	------------------------	-----------------------------	---

RNAV (GPS) RWY 24  
ERIE INTL/TOM RIDGE FLD (ERI)

RNP APCH - GPS.		<div>MALSR</div> <div></div>	MISSED APPROACH: Climb to 3000 direct LADVE and hold.
<div><div></div><div>Circling to Rwy 2 and 20 NA at night. Circling NA southeast of Rwy 6-24. For uncompensated Baro-VNAV systems, LNAV/VNAV NA below -15°C or above 54°C. For inop ALS increase LNAV/VNAV all Cats visibility to RVR 6000.</div></div>			

ATIS <b>120.35</b>	BUFFALO APP CON ★ <b>121.0 257.8</b>	ERIE TOWER ★ <b>118.1 (CTAF) 0 257.8</b>	GND CON <b>121.9</b>	CLNC DEL <b>126.8</b>	UNICOM <b>122.95</b>
-----------------------	---	---	-------------------------	--------------------------	-------------------------



ELEV 732		TDZE 730
----------	--	----------

CATEGORY	A	B	C	D
LPV DA	942/24		212 (300-½)	
LNAV/VNAV DA	1146/40		416 (500-¾)	
LNAV MDA	1160/24	430 (500-½)	1160/40	430 (500-¾)
CIRCLING	1160-1 428 (500-1)	1200-1 468 (500-1)	1200-1½ 468 (500-1½)	1340-2 608 (700-2)

HIRL Rwy 6-24

HIRL Rwy 2-20