

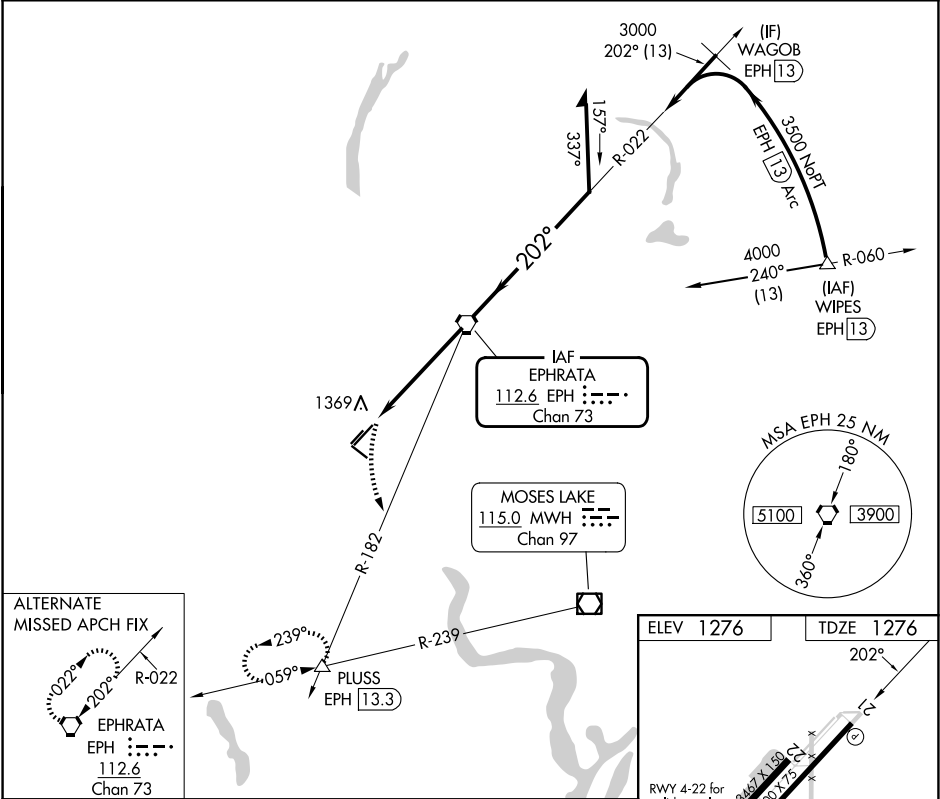
VORTAC EPH <b>112.6</b> Chan <b>73</b>	APP CRS <b>202°</b>	Rwy Ldg TDZE <b>1276</b> Apt Elev <b>1276</b>
--	------------------------	---

VOR RWY 21  
EPHRATA MUNI (EPH)

▼ When local altimeter setting not received, use Moses Lake/Grant County Intl altimeter setting and increase all MDA 40 feet, increase S-21 Cat D visibility ¼ mile. VDP NA when using Moses Lake/Grant County Intl altimeter setting. Final approach from EPH VORTAC holding pattern not authorized. Procedure turn required. Circling NA for Cats B, C and D northwest of Rwy 03-21.

MISSED APPROACH: Climbing left turn to 4000 via EPH R-182 to PLUS3 INT/EPH 13.3 DME and hold. Continue climb-in-hold to 4000.

ASOS <b>135.775</b>	GRANT COUNTY APP CON* <b>126.4 379.95</b>	UNICOM <b>122.8 (CTAF) 1</b>
------------------------	--	---------------------------------



4000

PLUSS

EPH

R-182

△

EPH

3.9

EPH

5

EPH VORTAC

022°

202°

4000

3000

Remain within 10 NM

gliders only

550

0.5% UP

3843 X 60

1

2

3

4

CATEGORY	A	B	C	D
S-21	1680-1	404 (500-1)	1680-1¼	404 (500-1¼)
CIRCLING	1740-1 464 (500-1)	1740-1 464 (500-1)	1780-1½ 504 (600-1½)	2500-3 1224 (1300-3)

MIRL Rwy 11-29 and 3-21

REIL Rwy 3, 11, 21 and 29

FAF to MAP 5 NM

Knots	60	90	120	150	180
Min:Sec	5:00	3:20	2:30	2:00	1:40

NW-1, 10 JUL 2025 to 07 AUG 2025

NW-1, 10 JUL 2025 to 07 AUG 2025