

| | | |
|--|------------------------|---|
| WAAS CH 50208 W03A | APP CRS 027° | Rwy Ldg 5500 TDZE 1269 Apt Elev 1276 |
|--|------------------------|---|

RNAV (GPS) RWY 3

EPHRATA MUNI (EPH)

RNP APCH.

T For uncompensated Baro-VNAV systems, LNAV/VNAV NA below -17°C or above 46°C. VDP and Baro-VNAV NA when using Moses Lake/Grant County Intl altimeter setting. When local altimeter setting not received, use Moses Lake/Grant County Intl altimeter setting and increase all DA/MDA 40 feet and LNAV Cat C and D visibility ¼ SM.

MISSED APPROACH: Climb to 3800 direct TICYU and hold.

| | | |
|------------------------|---|---------------------------------|
| ASOS 135.775 | GRANT COUNTY APP CON ★ 126.4 379.95 | UNICOM 122.8 (CTAF) 0 |
|------------------------|---|---------------------------------|

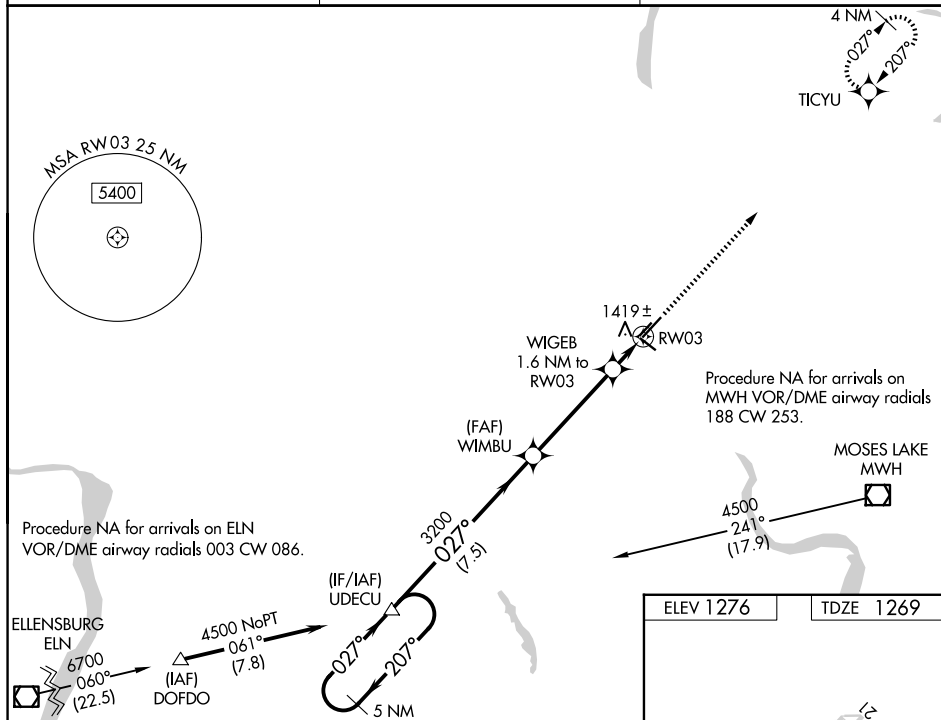
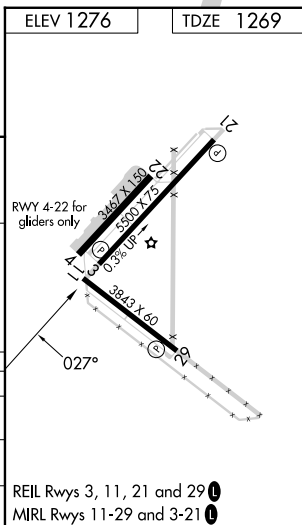


Figure 1-10: Example of a non-parallel VGS and TCH. The diagram illustrates a flight path starting at 4500 feet, holding for 5 NM, then descending. The VGS angle is 3.00° and the TCH angle is 60°. Key points include UDECU, WIMBU, and RW03. Distances are marked as 7.5 NM, 4.2 NM, 0.6 NM, and 1 NM. A note indicates 'VGS and descent angles not coincident (VGS Angle 3.00/TCH 40)'. A legend shows '3800' with an upward arrow and 'TICYU' with a star symbol. A note '*1 NM to RW03' is also present.

| CATEGORY | A | B | C | D |
|--------------|----------------------|----------------------|---|---|
| LPV DA | 1519-1 250 (300-1) | | | |
| LNAV/VNAV DA | 1689-1½ 420 (500-1½) | | | |
| LNAV MDA | 1680-1 411 (500-1) | 1680-1¼ 411 (500-1¼) | | |



RNAV (GPS) RWY 3