

WAAS CH <b>82308</b> <b>W21A</b>	APP CRS <b>207°</b>	Rwy Ldg <b>5500</b> TDZE <b>1276</b> Apt Elev <b>1276</b>
--	------------------------	---

RNAV (GPS) RWY 21  
EPHRATA MUNI (EPH)

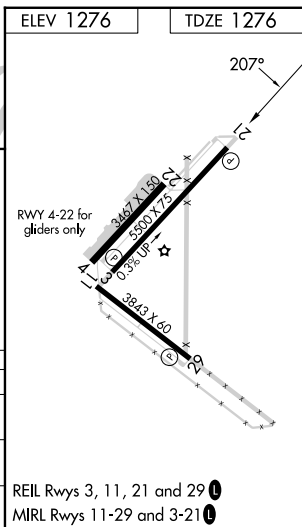
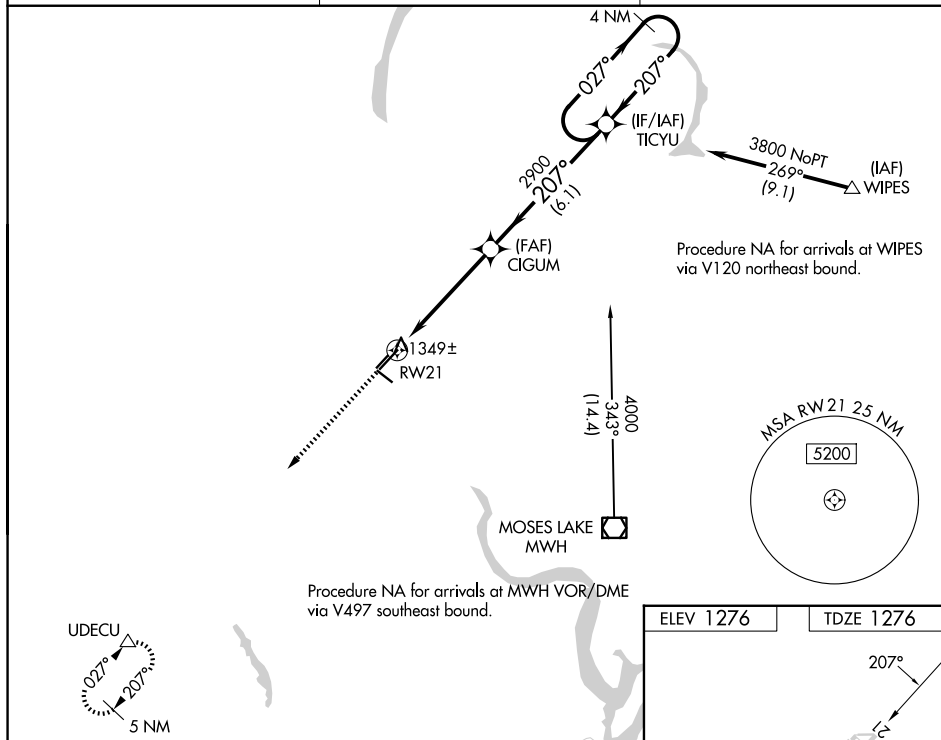
EPHRATA MUNI (EPH)

RNP APCH.

- V** For uncompensated Baro-VNAV systems, LNAV/VNAV NA below -17°C or above 46°C.  
**A** VDP and Baro-VNAV NA when using Moses Lake/Grant County Intl altimeter setting. When local altimeter setting not received, use Moses Lake/Grant County Intl altimeter setting and increase all DA/MDA 40 feet; increase visibility LPV all Cats, and LNAV Cats C and D ¼ SM.

**MISSED APPROACH:** Climb to 4500 direct UDECU and hold.

ASOS <b>135.775</b>	GRANT COUNTY APP CON ★ <b>126.4 379.95</b>	UNICOM <b>122.8 (CTAF) 0</b>
------------------------	---	---------------------------------



RNAV (GPS) RWY 21