



WAAS CH <b>97413</b> <b>W35A</b>	APP CRS <b>355°</b>	Rwy Idg <b>8002</b> TDZE <b>1147</b> Apt Elev <b>1167</b>
--	------------------------	---

RNAV (GPS) RWY 35  
ENID WOODRING RGNL (WDG)

RNP APCH-GPS.

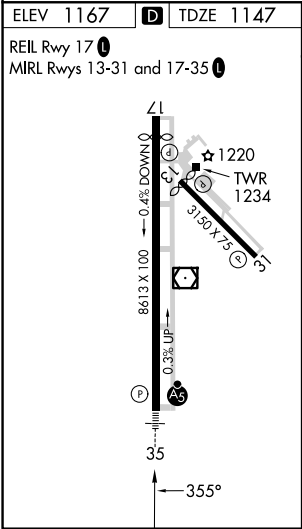
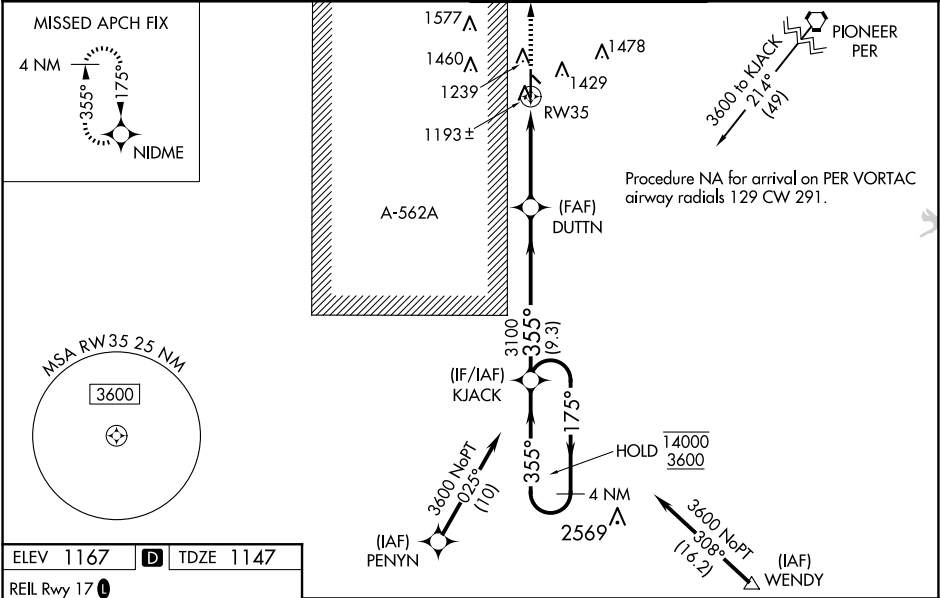


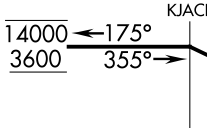
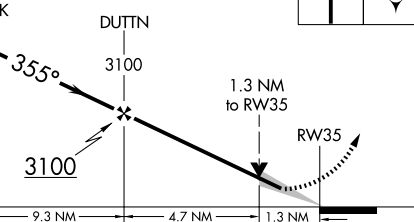

For uncompensated Baro-VNAV systems, LNAV/VNAV NA below -17°C or above 54°C. Baro-VNAV and VDP NA when using GOK altimeter setting. Circling Rwy 13 NA at night. When local altimeter setting not received, use GOK altimeter setting and increase LPV DA to 1445 feet; increase LNAV/VNAV DA to 1495 feet and all visibilities ½ SM. Increase all MDAs 100 feet and LNAV visibility Cat C/D/E ¼ SM, and Circling visibility Cat C/D ½ SM. For inop ALS, increase LPV Cat E visibility to ¾ SM, increase LNAV/VNAV all Cats visibility to ¾ SM, and increase LNAV Cat E visibility to 1 ⅜ SM.

MALSR

MISSED APPROACH:  
Climb to 3000 direct  
NIDME and hold.

AWOS-3PT <b>123.725</b>	VANCE APP CON ★ <b>121.3 346.325</b>	WOODRING TOWER ★ <b>118.9 (CTAF) 0 257.95</b>	GND CON <b>121.925</b>
----------------------------	---	--	---------------------------



4 NM Holding Pattern					VGSI and RNAV glidepath not coincident (VGSI Angle 3.00/TCH 49).	3000	NIDME
							
GP 3.00° TCH 55							
CATEGORY	A	B	C	D	E		
LPV DA	1347-½		200 (200-½)				
LNAV/VNAV DA	1397-½		250 (300-½)				
LNAV MDA	1600-½	453 (500-½)	1600-⅞		453 (500-⅞)		
 CIRCLING	1760-1	593 (600-1)	1820-1¾ 653 (700-1¾)	1880-2¼ 713 (800-2¼)	2000-3 833 (900-3)		

SC-1, 10 JUL 2025 to 07 AUG 2025

SC-1, 10 JUL 2025 to 07 AUG 2025