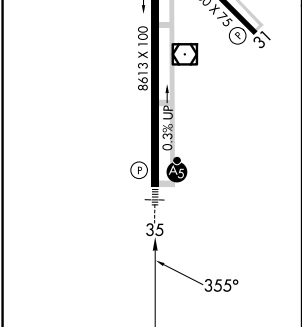
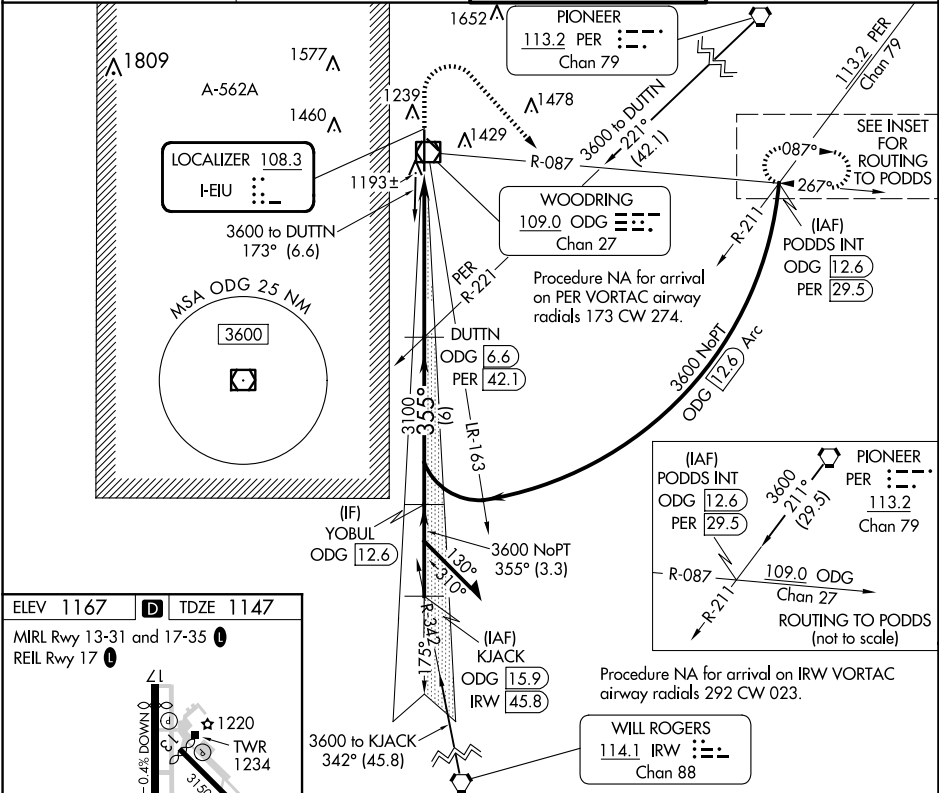


LOC I-EIU 108.3	APP CRS 355°	Rwy Idg TDZE Apt Elev	8002 1147 1167
---------------------------	------------------------	-----------------------------	---

ILS or LOC RWY 35
ENID WOODRING RGNL (WDG)

DME required.	MALS R	MISSED APPROACH: Climb to 1600 then climbing right turn to 3600 on heading 130° and ODG VOR/DME R-087 to PODDS INT/ 12.6 DME and hold.
DME from ODG VOR/DME. Simultaneous reception of I-EIU and ODG DME required. VDP NA when using GOK altimeter setting. Circling Rwy 13 NA at night. Procedure turn NA for Cat E. When local altimeter setting not received, use GOK altimeter setting and increase S-ILS 35 DA to 1445 feet; increase all MDAs 100 feet and S-LOC 35 visibility Cat C/D/E ¼ SM, and Circling visibility Cat C/D ½ SM. For inop ALS, increase S-ILS 35 Cat E visibility to ¾ SM, increase S-LOC 35 Cat E visibility to 1 ¾ SM.		

AWOS-3PT 123.725	VANCE APP CON ★ 121.3 346.325	WOODRING TOWER ★ 118.9 (CTAF) 0 257.95	GND CON 121.925
----------------------------	---	--	---------------------------



VGSI and ILS glidepath not coincident (VGSI Angle 3.00/TCH 49).	DUTTN ODG [6.6]	1600	3600	ODG	PODDS INT
Remain within 10 NM	3600	355°	3100	ODG [1.9]	ODG [0.7]
GS 3.00° TCH 55	3100	4.7 NM	1.3 NM		
CATEGORY	A	B	C	D	E
S-ILS 35		1347-½	200 (200-½)		
S-LOC 35	1600-½	453 (500-½)	1600-¾	453 (500-¾)	
CIRCLING	1760-1	593 (600-1)	1820-1¾ 653 (700-1¾)	1880-2¼ 713 (800-2¼)	2000-3 833 (900-3)