

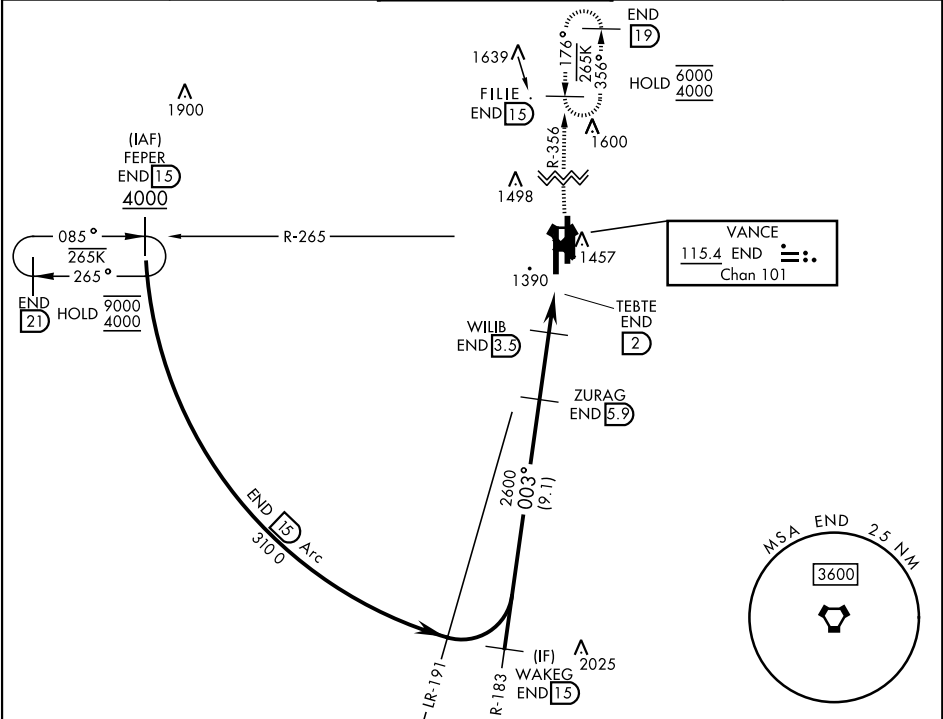
VOR/DME or TACAN RWY 35L

VORTAC END 115.4 Chan 101	APCH CRS 003°	Rwy Idg 9217 TDZE 1307 Arprt Elev 1307
---	-------------------------	---

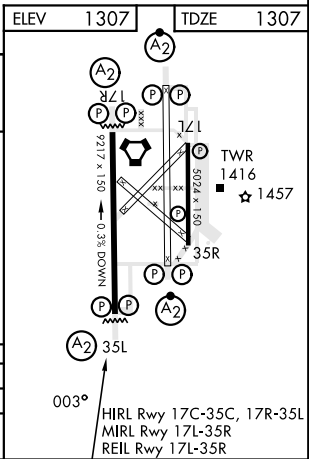
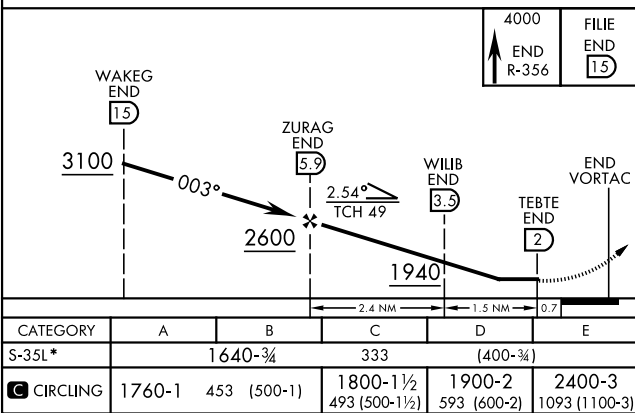
[USAF]

VANCE AFB (KEND)

* When ALS inop, increase vis to 1 mile.		SALS (A2)	MISSED APPROACH: Climb to 4000, intercept END VORTAC R-356 to FILIE and hold.	
ATIS ★ 115.4 263.15	APP CON 125.45 388.2 EAST 126.75 346.325 WEST	TOWER ★ 124.05 259.1	GND CON 121.675 289.4	CLNC DEL 225.4



EMERG SAFE ALT 100 NM 4500



VOR/DME or TACAN RWY 35L

SC-1, 10 JUL 2025 to 07 AUG 2025

SC-1, 10 JUL 2025 to 07 AUG 2025