


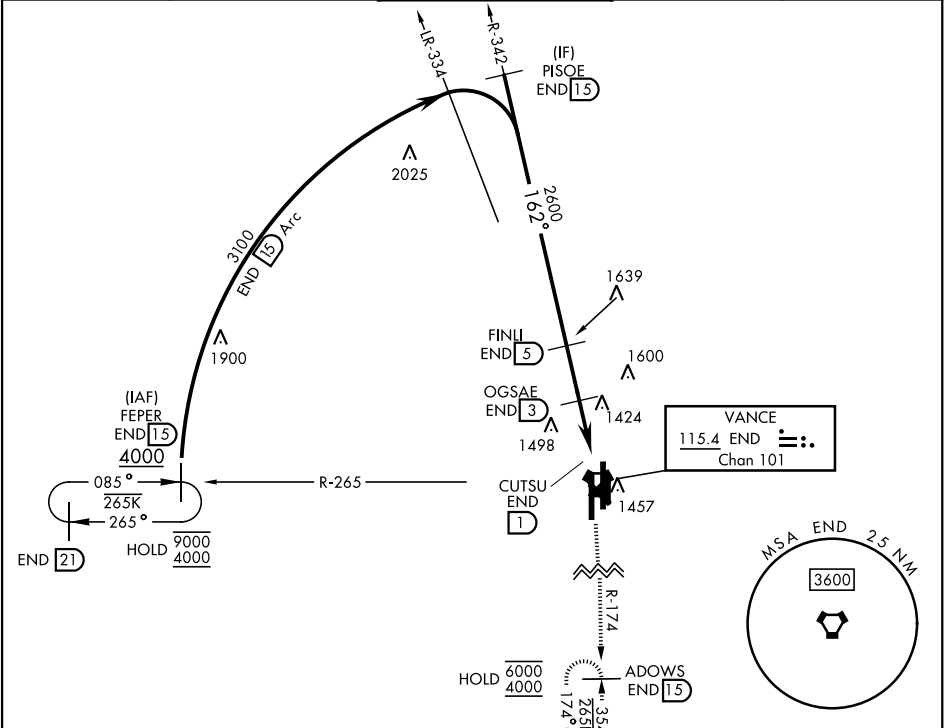
VOR/DME or TACAN RWY 17R

VORTAC END 115.4 Chan 101	APCH CRS 162°	Rwy Idg TDZE 1287 Arpt Elev 1307
---	-------------------------	--

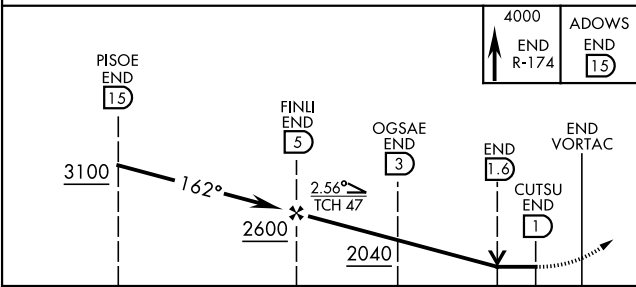
[USAF]

VANCE AFB (KEND)

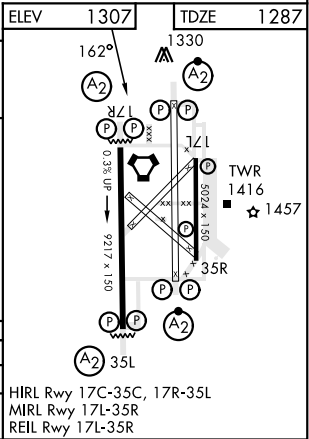
▼ * When ALS inop, increase CAT AB vis to 1 mile, CAT CDE vis to 1½ miles.		SALS <div><div>A2</div><div></div></div>	MISSED APPROACH: Climb to 4000, intercept END VORTAC R-174 to ADOWS and hold.						
ATIS★ 115.4 263.15		APP CON 125.45 388.2 EAST 126.75 346.325 WEST		TOWER★ 124.05 259.1		GND CON 121.675 289.4		CLNC DEL 225.4	



EMERG SAFE ALT 100 NM 4500



CATEGORY	A	B	C	D	E
S-17R *	1680-¾	393 (400-¾)	1680-7/8	393 (400-7/8)	
CIRCLING	1760-1	453 (500-1)	1800-1½ 493 (500-1½)	1900-2 593 (600-2)	2400-3 1093 (1100-3)



VOR/DME or TACAN RWY 17R

SC-1, 10 JUL 2025 to 07 AUG 2025

SC-1, 10 JUL 2025 to 07 AUG 2025