

VOR/DME RWY 17L

VORTAC END 115.4 Chan 101	APCH CRS 196°	Rwy Idg TDZE 1282 Arpt Elev 1307
---	-------------------------	--

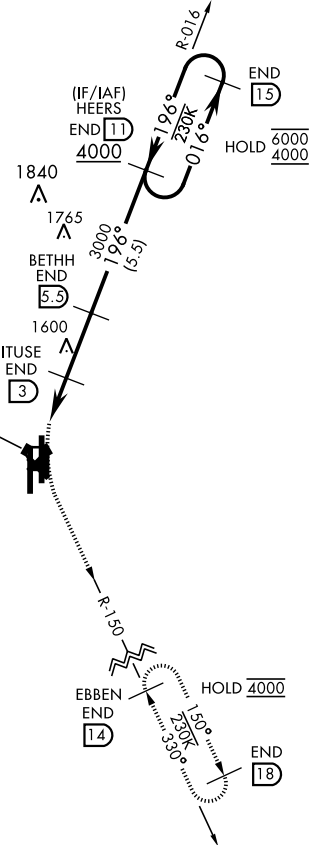
AL-135 [USAF]

VANCE AFB (KEND)

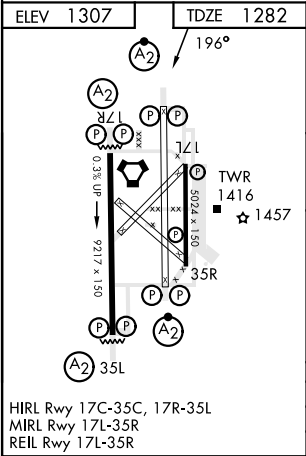
T		MISSED APPROACH: Climbing left turn to 4000 on heading 165°, intercept END VORTAC R-150 to EBBEN and hold.		
ATIS ★ 115.4 263.15	APP CON 125.45 388.2 EAST 126.75 346.325 WEST	TOWER ★ 124.05 259.1	GND CON 121.675 289.4	CLNC DEL 225.4

FOR USE BY 71 FTW
ACFT ONLY

VANCE
115.4 END
Chan 101



EMERG SAFE ALT 100 NM 4500



4000 hdg 165°	↑ END R-150	EBBEN END 14	VGS and descent angles not coincident (VGS Angle 3.00/TCH 54).			
CATEGORY A B C D						
S-17L 1720-1½ 438 (500-1½) NA						
CIRCLING 1760-1½ 453 (500-1½) NA						

VOR/DME RWY 17L