



RNAV (GPS) Y RWY 35L

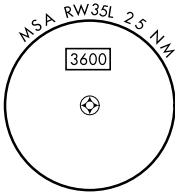
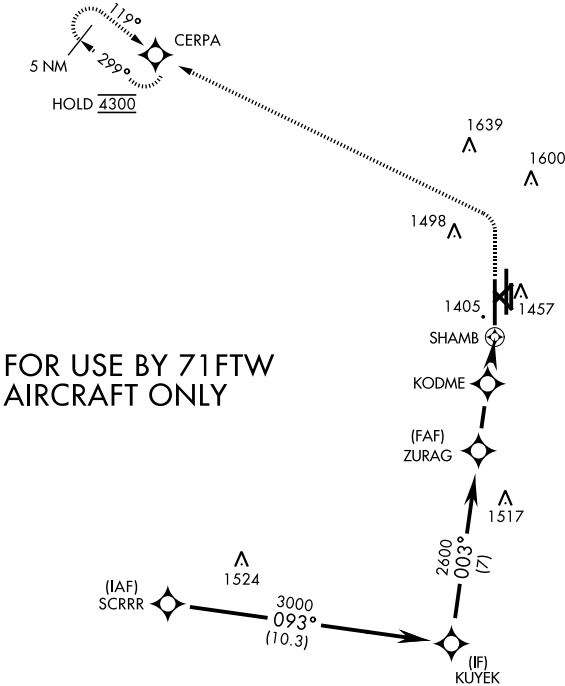
APCH CRS	Rwy Idg
003°	9217
	THRE
	1307
	Arpt Elev
	1307

[USAF]

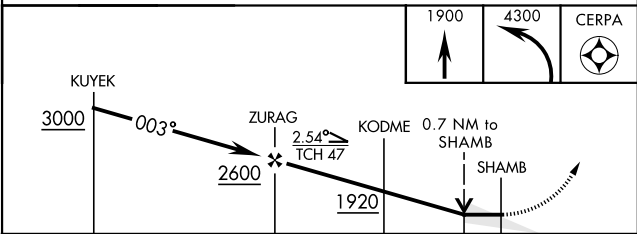
VANCE AFB (KEND)

RNP APCH - GPS	SALS 	MISSED APPROACH: Climb to 1900, then climbing left turn to 4300 direct CERPA and hold.
RADAR required		
 * When ALS inop, increase vis to 1 mile. Circling visibility reduction by helicopters not authorized.		

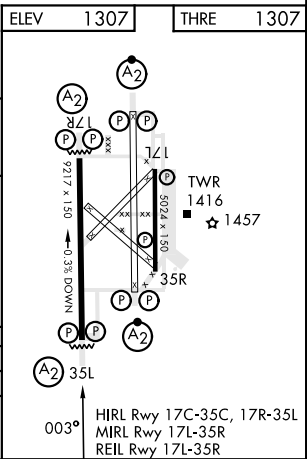
ATIS ★	APP CON	TOWER ★	GND CON	CLNC DEL
115.4 263.15	125.45 388.2 (E) 126.75 346.325 (W)	124.05 259.1	121.675 289.4	225.4



EMERG SAFE ALT 100 NM 4500



CATEGORY	A	B	C	D	E
LNAV MDA ★	1660 - 3/4 353 (400 - 3/4)				
CIRCLING	1760-1 453 (500-1)	1800-1 1/2 493 (500-1 1/2)	1900-2 593 (600-2)	2400-3 1093 (1100-3)	



RNAV (GPS) Y RWY 35L

SC-1, 10 JUL 2025 to 07 AUG 2025

SC-1, 10 JUL 2025 to 07 AUG 2025