

RNAV (GPS) Y RWY 17R

APCH CRS	Rwy Idg
163°	9217
TDZE	1287
Arpt Elev	1307

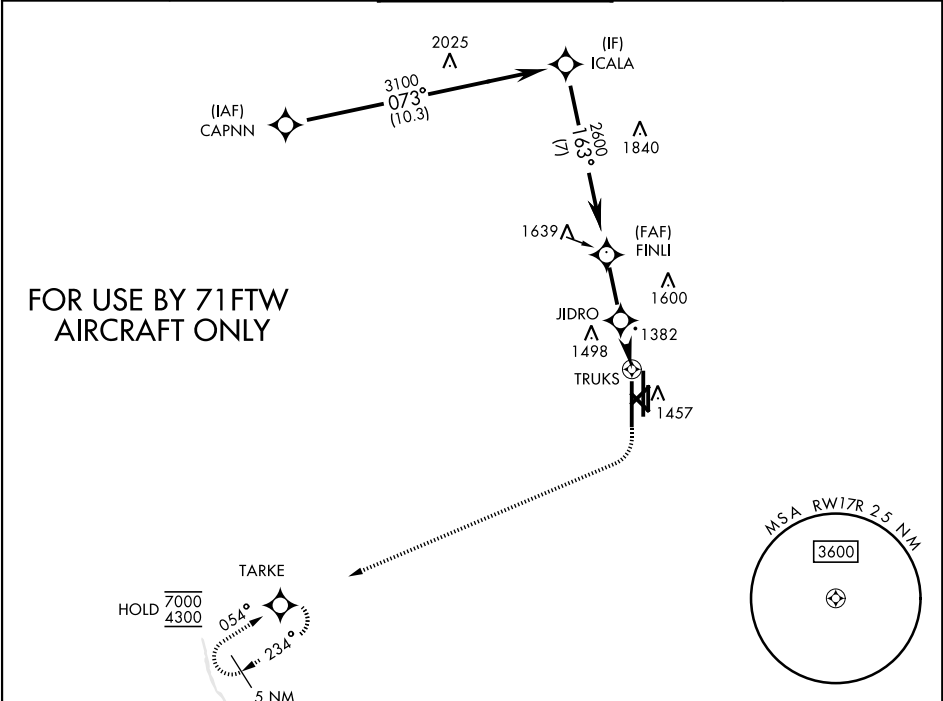
[USAF]

VANCE AFB (KEND)

RNP APCH - GPS	SALS
RADAR required	(A2)
* When ALS inop, increase vis to 1 mile. Circling visibility reduction by helicopters not authorized.	

MISSED APPROACH: Climb to 1900, then climbing right turn to 4300 direct TARKE and hold.

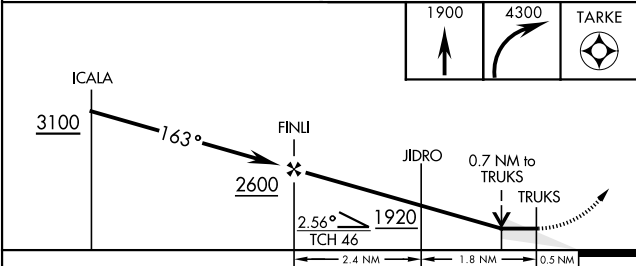
ATIS ★	APP CON	TOWER ★	GND CON	CLNC DEL
115.4 263.15	125.45 388.2 (E) 126.75 346.325 (W)	124.05 259.1	121.675 289.4	225.4



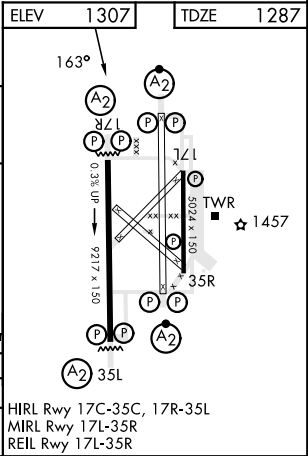
SC-1, 10 JUL 2025 to 07 AUG 2025

SC-1, 10 JUL 2025 to 07 AUG 2025

EMERG SAFE ALT 100 NM 4500



CATEGORY	A	B	C	D	E
LNAV MDA*	1640-¾ 353 (400-¾)				
CIRCLING	1760-1 453 (500-1)	1800-1½ 493 (500-1½)	1900-2 593 (600-2)	2400-3 1093 (1100-3)	



RNAV (GPS) Y RWY 17R