

ENID, OKLAHOMA

LOC I-JUS 111.55	APCH CRS 355°	Rwy Idg TDZE Arprt Elev 9217 1307 1307
----------------------------	-------------------------	--

[USAF]

ILS or LOC RWY 35L

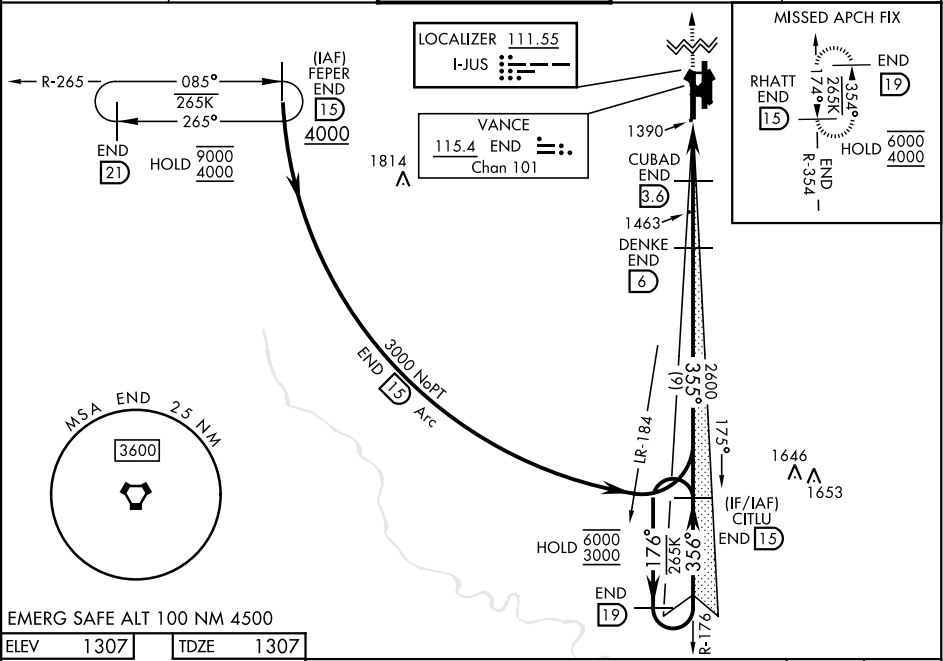
VANCE AFB (KEND)

▼ *When ALS inop, increase vis to 1 mile.
**When ALS inop, increase CAT AB vis to 1 mile;
CAT CDE vis to 1½ mile.

SALS
(A2)

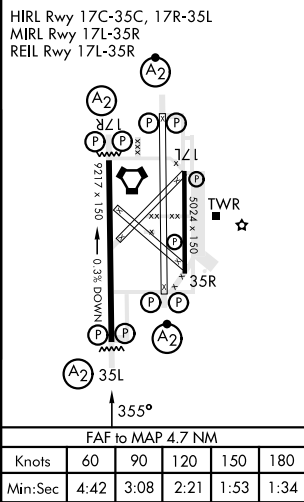
MISSED APPROACH: Climb to 4000, intercept END VORTAC R-354 to RHATT and hold.

ATIS ★ 115.4 263.15	APP CON 125.45 388.2 EAST 126.75 346.325 WEST	TOWER ★ 124.05 259.1	GND CON 121.675 289.4	CLNC DEL 225.4
-------------------------------	---	--------------------------------	---------------------------------	--------------------------



EMERG SAFE ALT 100 NM 4500

ELEV 1307	TDZE 1307
-----------	-----------



END 19	CITLU END 15	DENKE END 6	CUBAD END 3.6	END 2.4
6000	3000	176°	356°	355°
GS 2.50°	TCH 48	2600	1720	2.3 NM
2.4 NM	4000	RHATT END 15		
CATEGORY				
S-ILS 35L		A	B	C
S-LOC 35L *		D		
CIRCLING		E		
S-LOC 35L **		LOCAL ALTIMETER, WITHOUT LAST STEPDOWN FIX		
CIRCLING		S-LOC 35L **		

ENID, OKLAHOMA

36°20'N-97°55'W

VANCE AFB (KEND)

Orig 12JUN25

ILS or LOC RWY 35L

SC-1, 10 JUL 2025 to 07 AUG 2025

SC-1, 10 JUL 2025 to 07 AUG 2025