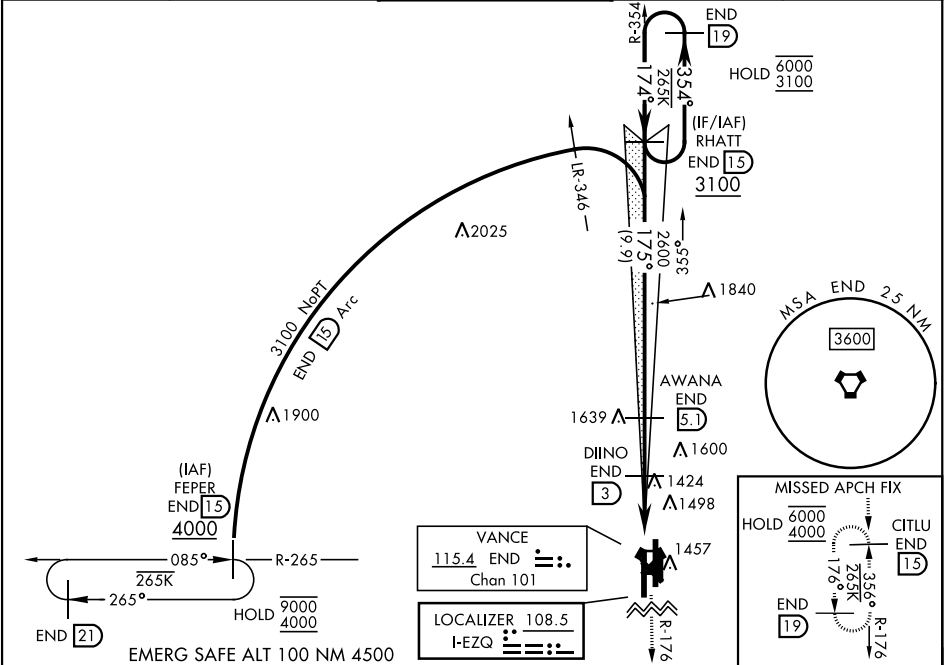


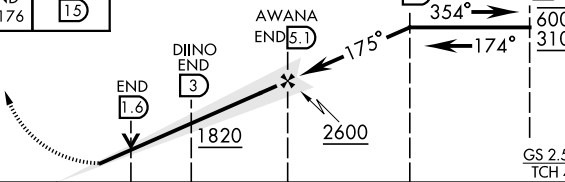
LOC I-EZQ 108.5	APCH CRS 175°	Rwy Idg TDZE Arprt Elev 9217 1287 1307	[USAF]	VANCE AFB (KEND)
---------------------------	-------------------------	--	--------	------------------

ILS or LOC RWY 17R

▼ *When ALS inop, increase CAT AB vis to 1 mile; CAT CDE vis to 1½ miles. ** When ALS inop, increase CAT AB vis to 1 mile; CAT CDE vis to 1½ miles.	SALS (A2)	MISSED APPROACH: Climb to 4000, intercept END VORTAC R-176 to CITLU and hold.
--	---------------------	---

ATIS ★ 115.4 263.15	APP CON 125.45 388.2 (E) 126.75 346.325 (W)	TOWER ★ 124.05 259.1	GNF CON 121.675 289.4	CLNC DEL 225.4
-------------------------------	---	--------------------------------	---------------------------------	--------------------------



4000 END R-176 CITLU END 15	RHATT END 15 AWANA END 5.1 DIINO END 3 END 19 6000 3100 GS 2.50° TCH 47				ELEV 1307	TDZE 1287
						

ILS or LOC RWY 17R

SC-1, 10 JUL 2025 to 07 AUG 2025

SC-1, 10 JUL 2025 to 07 AUG 2025