

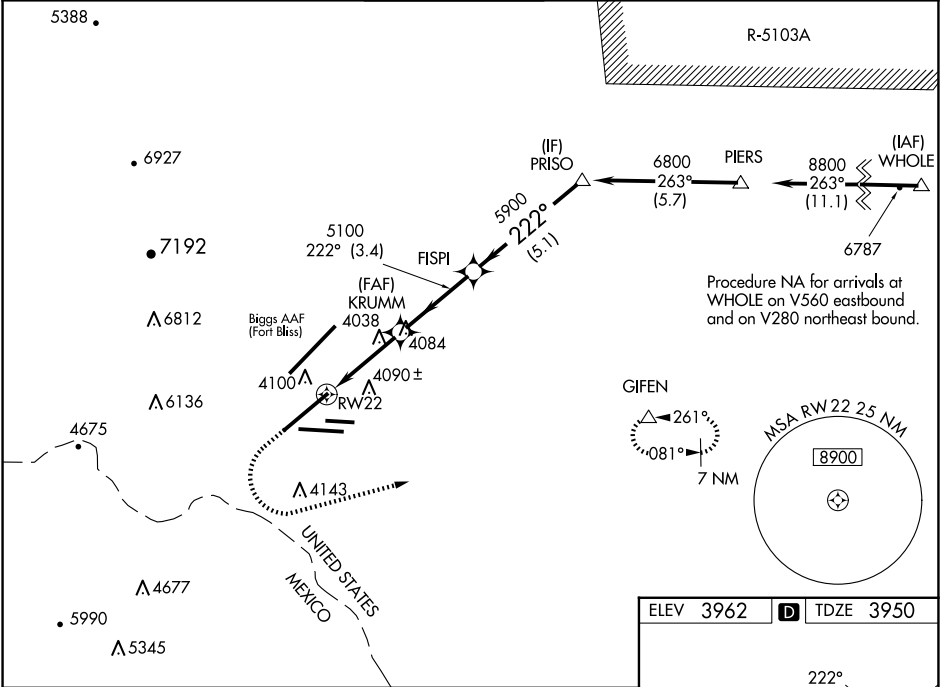
WAAS CH 78244 W22A	APP CRS 222°	Rwy Ldg TDZE 3950 Apt Elev 3962
--	------------------------	---

RNAV (GPS) Y RWY 22

EL PASO INTL (ELP)

RNP APCH - GPS.	MALSR	MISSED APPROACH: Climb to 4600 then climbing left turn to 8000 direct GIFEN and hold, continue climb-in-hold to 8000.
ASR		

D-ATIS 120.0 254.3	EL PASO APP CON 124.25 298.85	EL PASO TOWER 118.3 239.275	GND CON 121.9 348.6	CLNC DEL 125.0 379.1
------------------------------	---	---------------------------------------	-------------------------------	--------------------------------



			VGSI and RNAV glidepath not coincident (VGSI Angle 3.00/TCH 70).	
CATEGORY	A	B	C	D
LPV DA	4150/24 200 (200-½)			
LNNAV/ VNAV DA	4200/24 250 (300-½)			4221/24 271 (300-½)
LNNAV MDA	4300/24	350 (400-½)	4300/30	350 (400-⅔)
CIRCLING	4420-1 458 (500-1)	4440-1 478 (500-1)	4480-1½ 518 (600-1 ½)	4680-2¼ 718 (800-2¼)

ELEV 3962 TDZE 3950

MIRL Rwy 8L-26R
REIL Rwy 4 and 8R
HIRL Rwy 4-22 and 8R-26L

SC-3, 10 JUL 2025 to 07 AUG 2025

SC-3, 10 JUL 2025 to 07 AUG 2025