

APP CRS
042°

Rwy Ldg
TDZE
3923

Apt Elev
3962

RNAV (GPS) X RWY 4

EL PASO INTL (ELP)

RNP APCH-GPS.

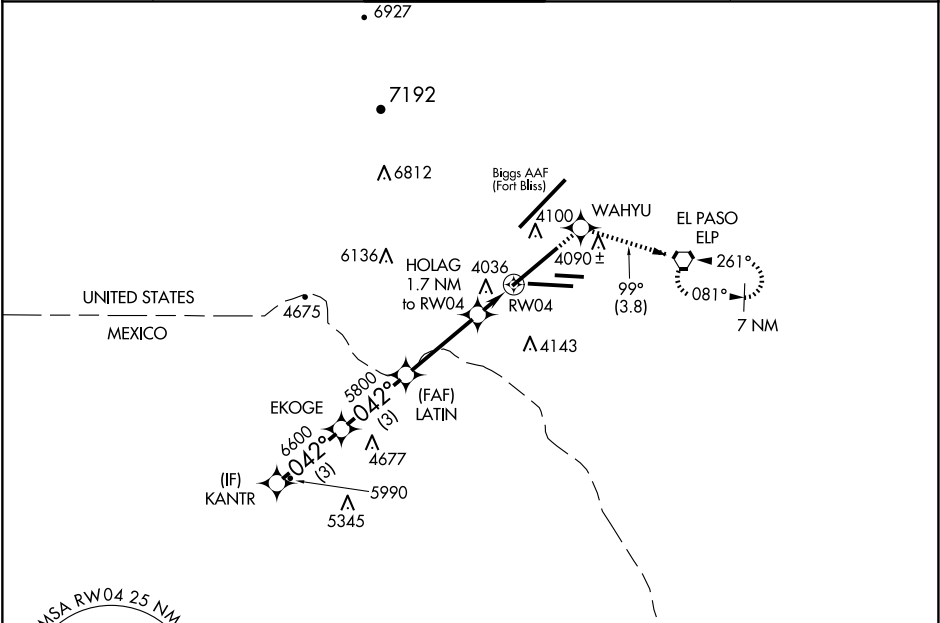
⚠

ASR

Circling NA for Cat D north of Rwy 26R and northwest of Rwy 4.

MISSED APPROACH: Climb to 6900 direct WAHYU and on track 099° to ELP VORTAC and hold, continue climb-in-hold to 6900.

D-ATIS 120.0 254.3	EL PASO APP CON 124.25 298.85	EL PASO TOWER 118.3 239.275	GND CON 121.9 348.6	CLNC DEL 125.0 379.1
------------------------------	---	---------------------------------------	-------------------------------	--------------------------------



ELEV 3962

D

TDZE 3923

KANTR
7500

EKOGE
6600

LATIN
5800

HOLAG
1.7 NM to RW04

WAHYU
1.1 NM to RW04

ELP

6900

tr 099°

042°

VGSI and descent angles not coincident (VGSI Angle 3.00/TCH 55).

3.42° TCH 55

3 NM

3 NM

3.3 NM

0.6 NM

1.1 NM

CATEGORY	A	B	C	D
LNAV MDA	4320/55	397 (400-1)	4320/60	397 (400-1½)
C CIRCLING	4420-1 458 (500-1)	4460-1 498 (500-1)	4480-1½ 518 (600-1½)	4680-2¼ 718 (800-2¼)

MIRL Rwy 8L-26R

REIL Rwys 4 and 8R

HIRL Rwys 4-22 and 8R-26L