

APP CRS
042°

Rwy Ldg
TDZE
3923

Apt Elev
3962

RNAV (RNP) Z RWY 4

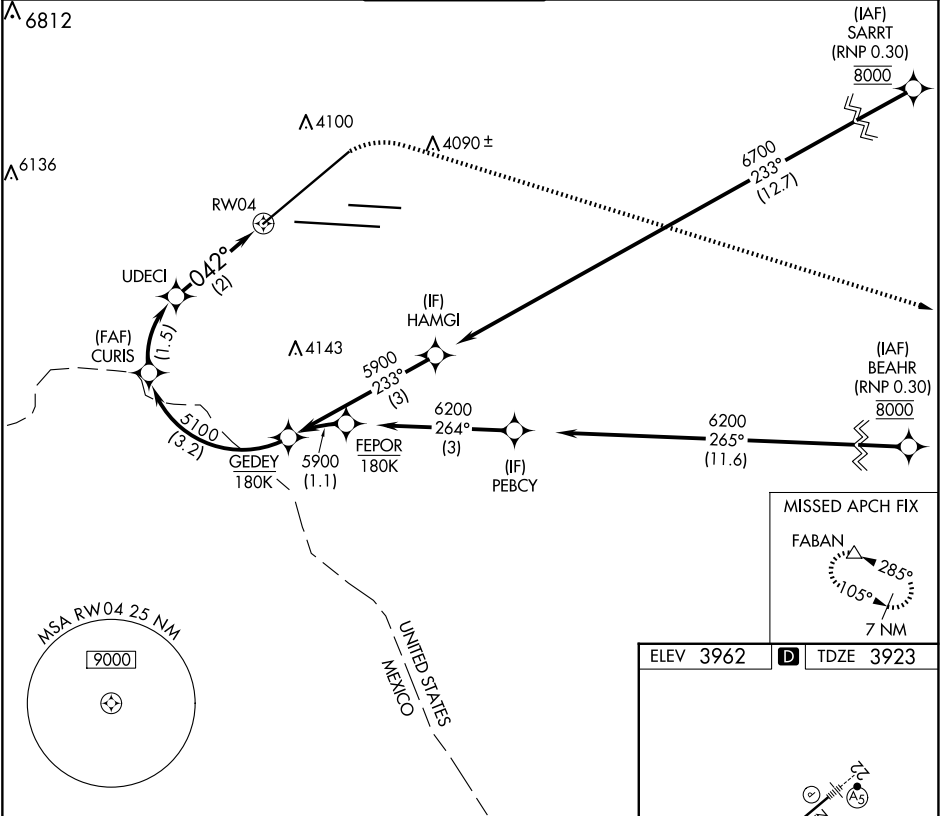
EL PASO INTL (ELP)

RNP AR APCH. RF required.

MISSED APPROACH: Climb to 4400 then climbing right turn to 7500 direct FABAN and hold.

ASR For uncompensated Baro-VNAV systems, procedure NA below -5°C or above 54°C.

| | | | | |
|------------------------------|---|---------------------------------------|-------------------------------|--------------------------------|
| D-ATIS 120.0 254.3 | EL PASO APP CON 124.25 298.85 | EL PASO TOWER 118.3 239.275 | GND CON 121.9 348.6 | CLNC DEL 125.0 379.1 |
|------------------------------|---|---------------------------------------|-------------------------------|--------------------------------|



See planview for multiple IF locations.

GEDEY 5900

CURIS 5100

UDECI 4618

RWY 04 042°

GP 3.00° TCH 55

3.2 NM 1.5 NM 2 NM

CATEGORY A B C D

RNP 0.20 DA 4282/55 359 (400-1)

RNP 0.30 DA 4352-1 ¼ 429 (400-1 ¼)

AUTHORIZATION REQUIRED

MIRL Rwy 8L-26R

REIL Rwy 4 and 8R

HIRL Rwy 4-22 and 8R-26L