

APP CRS  
265°

Rwy Ldg  
TDZE  
Apt Elev

9025  
3962  
3962

RNAV (RNP) Z RWY 26L  
EL PASO INTL (ELP)

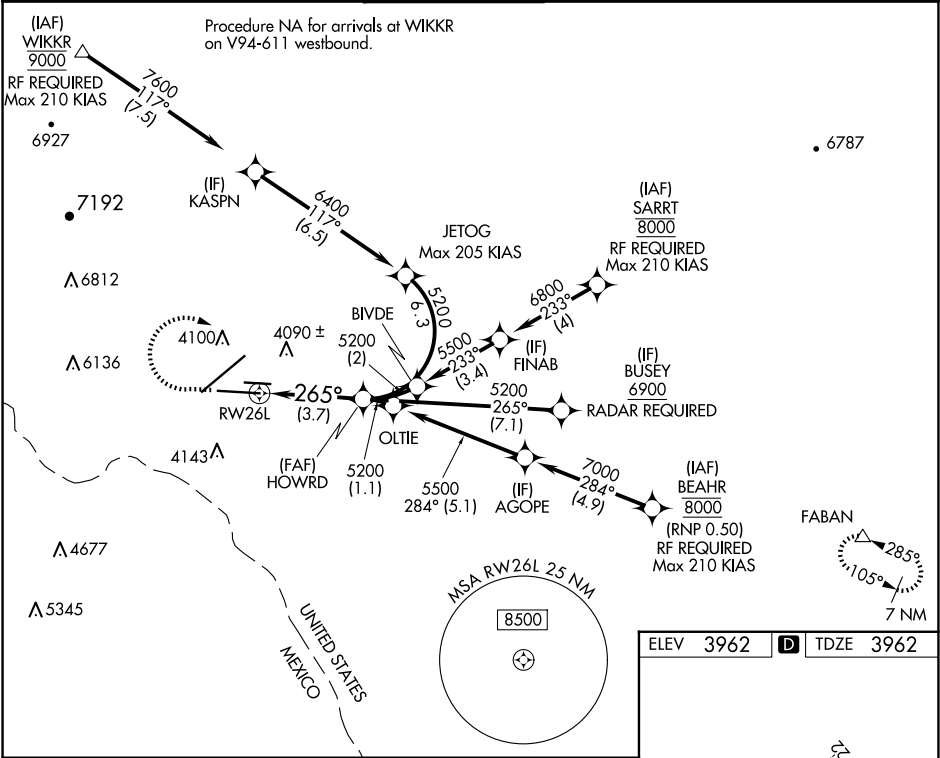
ASR

For uncompensated Baro-VNAV systems, procedure NA below -8°C (18°F) or above 50°C (122°F). For inop MALS, increase RNP 0.30 visibility all Cats to 1 mile. GPS Required.

MALS

MISSED APPROACH: Climb to 4400, then climbing right turn to 7500 direct FABAN and hold.

D-ATIS 120.0 254.3	EL PASO APP CON 124.25 298.85	EL PASO TOWER 118.3 239.275	GND CON 121.9 348.6	CLNC DEL 125.0 379.1
-----------------------	----------------------------------	--------------------------------	------------------------	-------------------------



4400 7500 FABAN

VGSI and glidepath not coincident (VGSI Angle 3.00/TCH 75).

See planview for multiple IF locations.

HOWRD

5200

GP 3.00° TCH 55

3.7 NM

RW26L

265°

CATEGORY	A	B	C	D
RNP 0.30 DA	4275-½ 313 (400-½)			

AUTHORIZATION REQUIRED

ELEV 3962 TDZE 3962

12620 X 150

0.3% DOWN

5499 X 75

0.5% UP

9025 X 150

0.3% DOWN

TWR

26L

265°

MIRL Rwy 8L-26R  
REIL Rwys 4 and 8R  
HIRL Rwys 4-22 and 8R-26L