

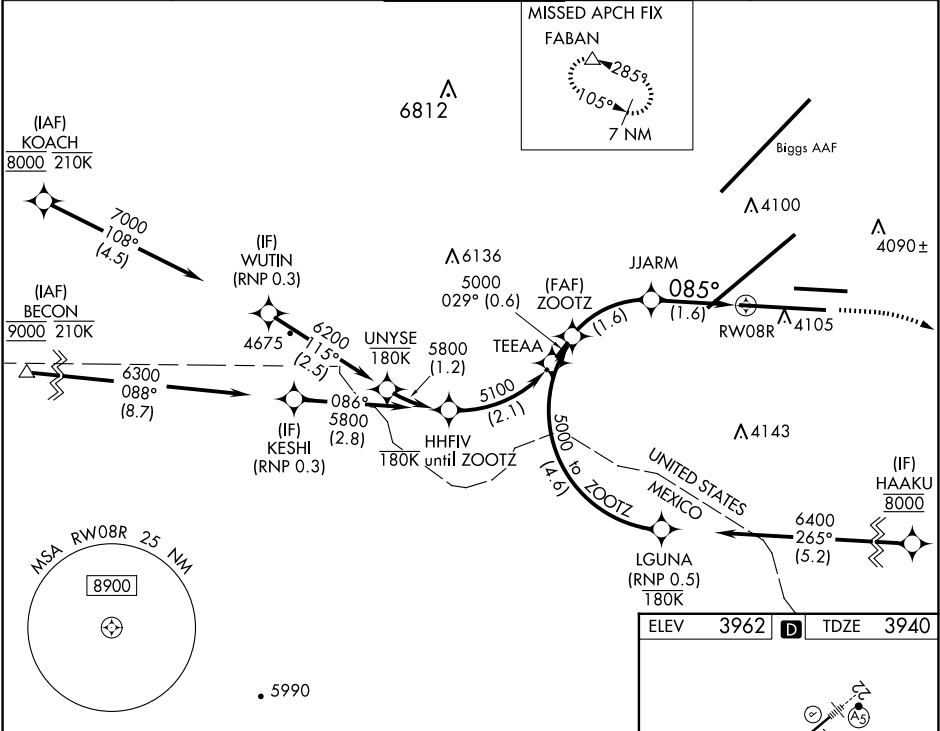
APP CRS	Rwy Ldg	9025
085°	TDZE	3940
	Apt Elev	3962

RNAV (RNP) X RWY 8R

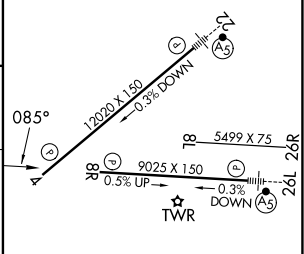
EL PASO INTL (ELP)

RNP AR APCH. RF required.		MISSED APPROACH: Climb to 4400 then climbing right turn to 7500 direct FABAN and hold.
ASR	For uncompensated Baro-VNAV systems, procedure NA below -5°C or above 54°C.	

D-ATIS 120.0 254.3	EL PASO APP CON 124.25 298.85	EL PASO TOWER 118.3 239.275	GND CON 121.9 348.6	CLNC DEL 125.0 379.1
-----------------------	----------------------------------	--------------------------------	------------------------	-------------------------



VGSi and RNAV glidepath not coincident (VGSi Angle 3.00/TCH 75).		4400	7500	FABAN
ZOOTZ 5000				
5000	JJARM 4487			
GP 3.00° TCH 50	085°	RW08R		
See planview for multiple IF locations.				
1.6 NM		1.6 NM		
CATEGORY	A	B	C	D
RNP 0.20 DA	4193-¾		253 (300-¾)	
RNP 0.30 DA	4234-⅞		294 (300-⅞)	
AUTHORIZATION REQUIRED				

ELEV	3962	TDZE	3940
			
MIRL Rwy 8L-26R HIRL Rwy 4-22 and 8R-26L REIL Rwy 4 and 8R			