

LOC/DME I-ETF	APP CRS	Rwy Ldg	12020
111.5	042°	TDZE	3923
Chan 52		Apt Elev	3962

LOC/DME RWY 4
EL PASO INTL (ELP)

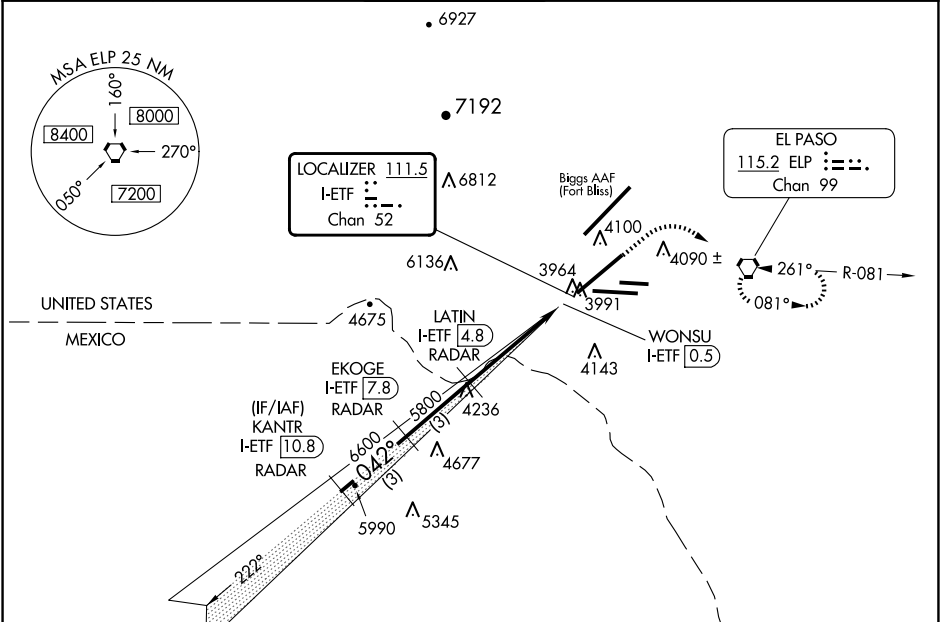
RADAR required for procedure entry.

ASR

Circling NA for Cat D north of Rwy 26R and northwest of Rwy 4.

MISSED APPROACH: Climb to 4500 then climbing right turn to 6900 direct ELP VORTAC and hold, continue climb-in-hold to 6900.

D-ATIS	EL PASO APP CON	EL PASO TOWER	GND CON	CLNC DEL
120.0 254.3	124.25 298.85	118.3 239.275	121.9 348.6	125.0 379.1



ELEV 3962

TDZE 3923

KANTR I-ETF 10.8 RADAR

EKOGE I-ETF 7.8 RADAR

LATIN I-ETF 4.8 RADAR

WONSU I-ETF 0.5

4500

6900

ELP

7500

6600

5800

3.42° TCH 55

VGSI and descent angles not coincident (VGSI Angle 3.00/TCH 55). Disregard GS indications.

3 NM

3 NM

4.3 NM

0.7

CATEGORY	A	B	C	D
S-4	4300/50	377 (400-1)	4300/60	377 (400-1¼)
CIRCLING	4420-1 458 (500-1)	4460-1 498 (500-1)	4480-1½ 518 (600-1½)	4680-2¼ 718 (800-2¼)

MIRL Rwy 8L-26R
REIL Rwy 4 and 8R
HIRL Rwy 4-22 and 8R-26L

SC-3, 10 JUL 2025 to 07 AUG 2025

SC-3, 10 JUL 2025 to 07 AUG 2025