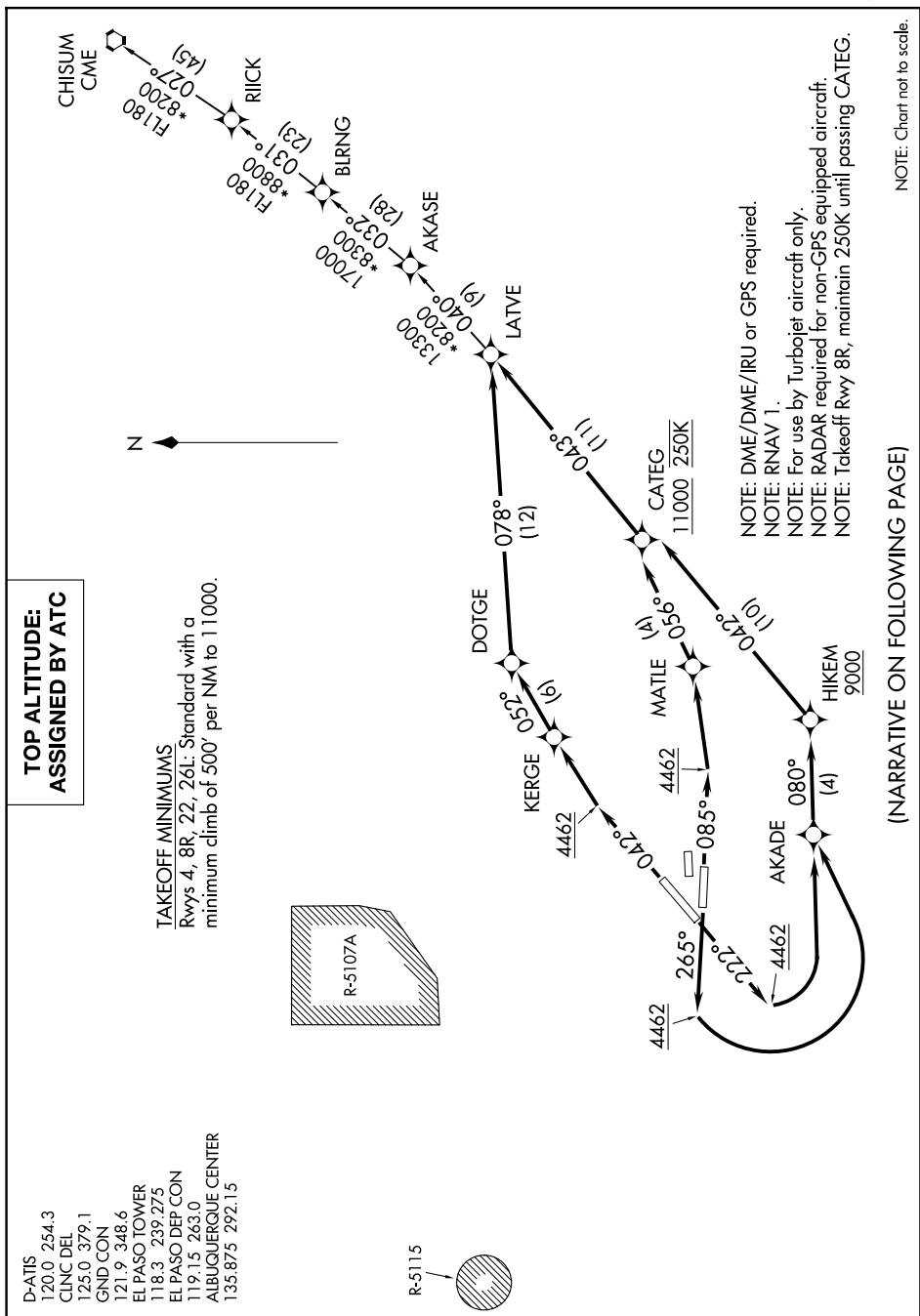


## LATVE THREE DEPARTURE (RNAV)



**TOP ALTITUDE:  
ASSIGNED BY ATC**

**TAKEOFF MINIMUMS**  
Rwys 4, 8R, 22, 26L: Standard with a minimum climb of 500' per NM to 11000.

D-ATIS  
120.0 254.3  
CINC DEL  
125.0 379.1  
GND CON  
121.9 348.6  
EL PASO TOWER  
1118.3 239.275  
EL PASO DEP CON  
1119.15 263.0  
ALBUQUERQUE CENTER  
35875 292.15

R-5115

R-5107A

(NARRATIVE ON FOLLOWING PAGE)

NOTE: Chart not to scale.

NOTE: DME/DME/IRU or GPS required.  
NOTE: RNAV 1.  
NOTE: For use by Turboprop aircraft only.  
NOTE: RADAR required for non-GPS equipped aircraft.  
NOTE: Takeoff Rwy 8R, maintain 250K until 1000 feet.