

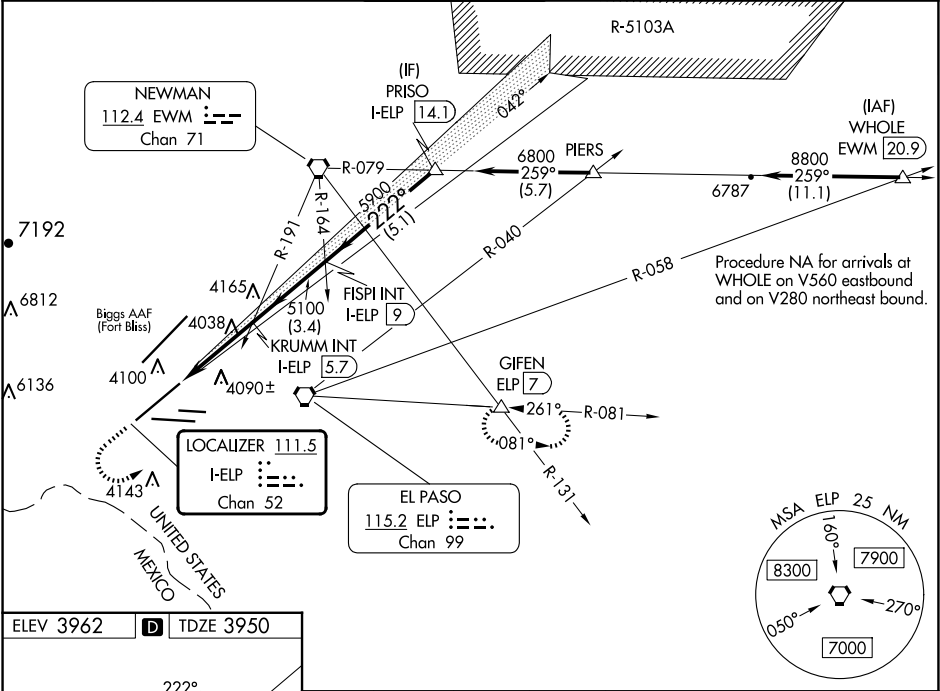
LOC/DME I-ELP	APP CRS	Rwy Ldg	12020
111.5	222°	TDZE	3950
Chan 52		Apt Elev	3962

ILS or LOC RWY 22

EL PASO INTL (ELP)

RADAR required when R-5103 in use.	MALSR	MISSED APPROACH: Climb to 4600 then climbing left turn to 8000 on heading 050° and on ELP VORTAC R-081 to GIFEN INT/ELP 7 DME and hold, continue climb-in-hold to 8000.
<p>⚠ Circling NA for Cat D and E north of Rwy 26R and northwest of Rwy 4.</p> <p>⚠ For inop ALS, increase S-LS 22 Cat E visibility to RVR 4000, S-LOC 22 ASR Cots C/D/E to RVR 5500.</p>		

D-ATIS	EL PASO APP CON	EL PASO TOWER	GND CON	CLNC DEL
120.0 254.3	124.25 298.85	118.3 239.275	121.9 348.6	125.0 379.1



ELEV 3962	D	TDZE 3950
MIRL Rwy 8L-26R		
REIL Rwys 4 and 8R		
HIRL Rwys 4-22 and 8R-26L		
FAF to MAP 3.4 NM		
Knots	60	90 120 150 180
Min:Sec	3:24	2:16 1:42 1:22 1:08

4600 ↑	8000 hdg 050°	ELP R-081	GIFEN △	VGSI and ILS glidepath not coincident (VGSI Angle 3.00/TCH 70).				
Use I-ELP DME when on the localizer course.								
CATEGORY	A	B	C	D		E		
S-ILS 22	4150/24 200 (200-½)							
S-LOC 22	4300/24	350 (400-½)	4300/30 350 (400-¾)					
<b>C</b> CIRCLING	4420-1 458 (500-1)	4440-1 478 (500-1)	4480-1½ 518 (600-1½)	4680-2¼ 718 (800-2¼)	4700-2½ 738 (800-2½)			

SC-3, 10 JUL 2025 to 07 AUG 2025

SC-3, 10 JUL 2025 to 07 AUG 2025