
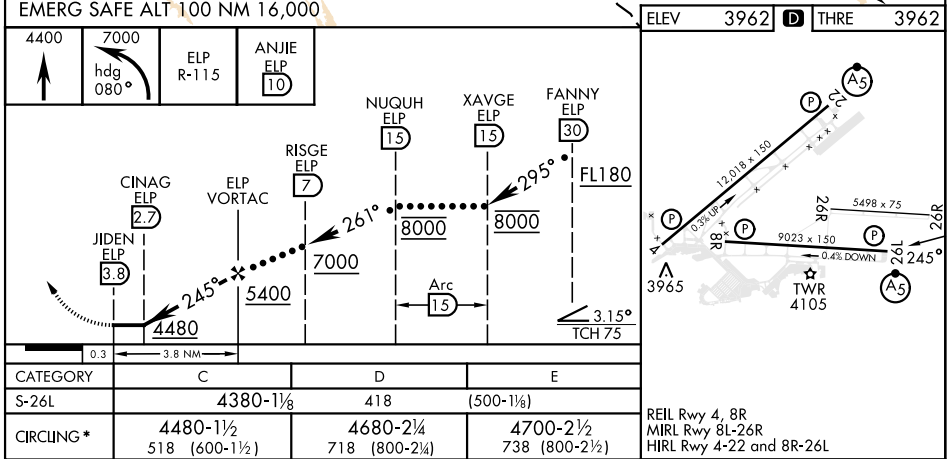
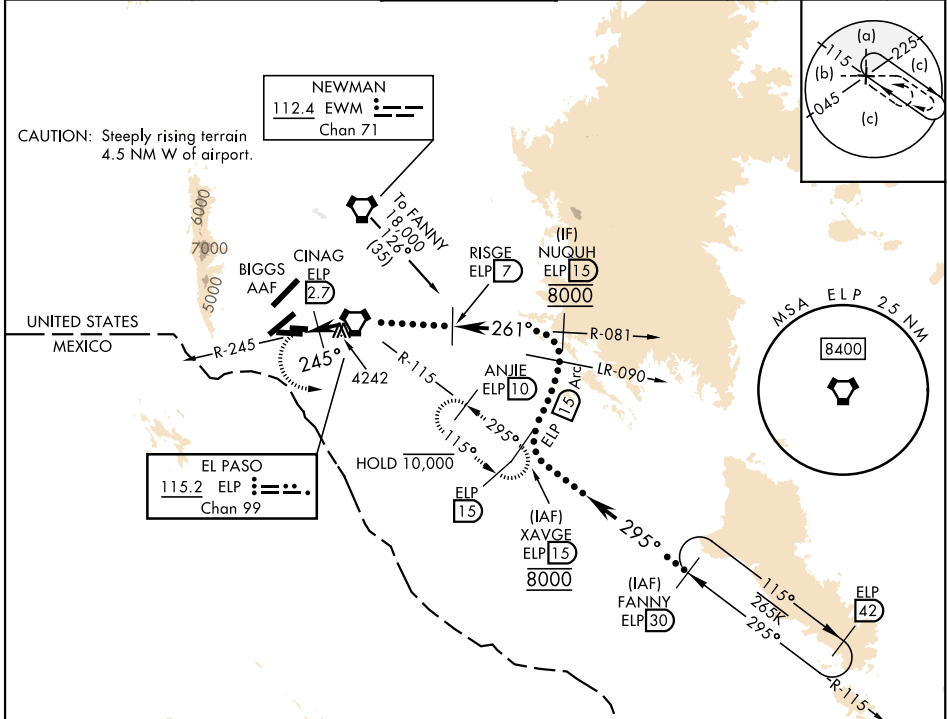


HI-VOR or TACAN RWY 26L

VORTAC ELP 115.2 Chan 99		APCH CRS 245°		Rwy Idg 9023 THRE 3962 Arpt Elev 3962	[USAF]	EL PASO INTL (KELP)			
DME required					MALSR	MISSED APPROACH: Climb to 4400, then climbing left turn to 7000 via heading 080° and ELP VORTAC R-115 to ANJIE/ELP 10 DME and hold, continue climb in hold to 7000.			
*Circling not authorized for CAT DE west of Rwy 4-22									
ATIS 120.0 254.3		APP CON S of V16 119.15 353.5 N of V16 124.25 298.85		TOWER 118.3 239.275		GND CON 121.9 348.6		CLNC DEL 125.0 379.1	ASR



HI-VOR or TACAN RWY 26L