

RNAV (GPS) RWY 22

BIGGS AAF (KBIF)

[USA]

RNP APCH - GPS

RADAR required when R-5103A, R-5103B, R-5103C, 5107K are active.

T * Circling not authorized for CAT D West of Rwy 4-22.

SSALR

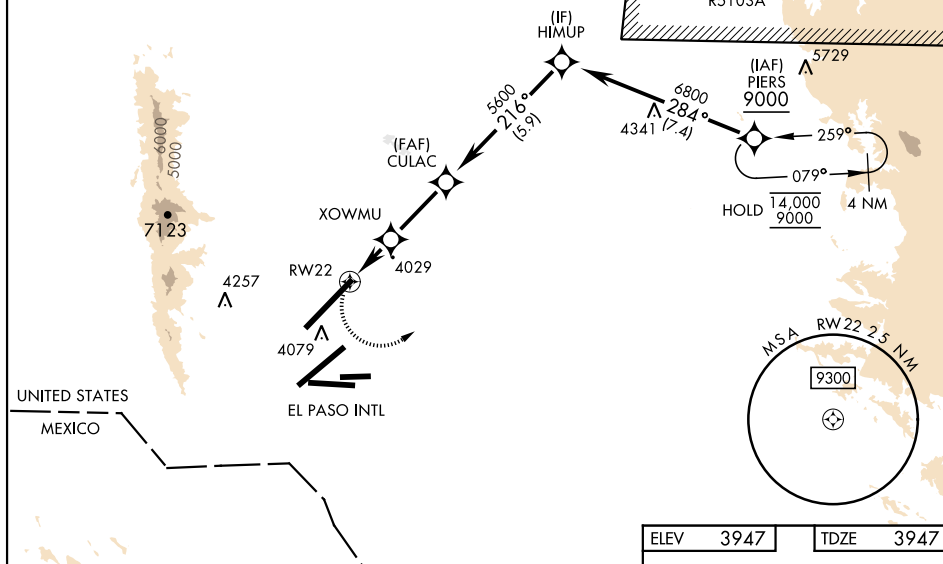



MISSED APPROACH: Climb to 4400 then climbing left turn to 9000 direct PIERS and hold, continue climb-in-hold to 9000.

Arrivals expect RADAR vectors to final when restricted areas are active.

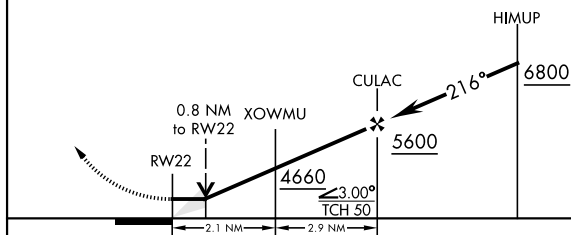
Procedure not authorized via V-560 eastbound without holding at PIERS. ATC clearance required.

CAUTION: EL PASO INTL airport is 2.5 NM southeast with same runway configuration.



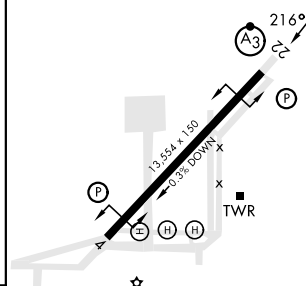
4400 ↑	9000 ↖	PIERS 
-----------	-----------	--

VGSI and descent angles not coincident
(VGSI Angle 3.00/TCH 75).



CATEGORY	A	B	C	D
INAV MDA	4280-1	333	(400-1)	
C CIRCLING*	4400-1	453 (500-1)	4560-1 ³⁴ 613 (700-1 ³⁴)	4560-2 613 (700-2)

ELEV	3947		TDZE	3947
------	------	--	------	------



RNAV (GPS) RWY 22