

ILS or LOC RWY 22

I-BIF LOC/DME <b>110.9</b> Chan <b>46</b>	APCH CRS <b>216°</b>	Rwy Idg <b>13,554</b> TDZE <b>3947</b> Arpt Elev <b>3947</b>
---	-------------------------	--

[USA]

BIGGS AAF (KBIF)

RADAR required when R-5103-A,B,C, R-5107K are active.

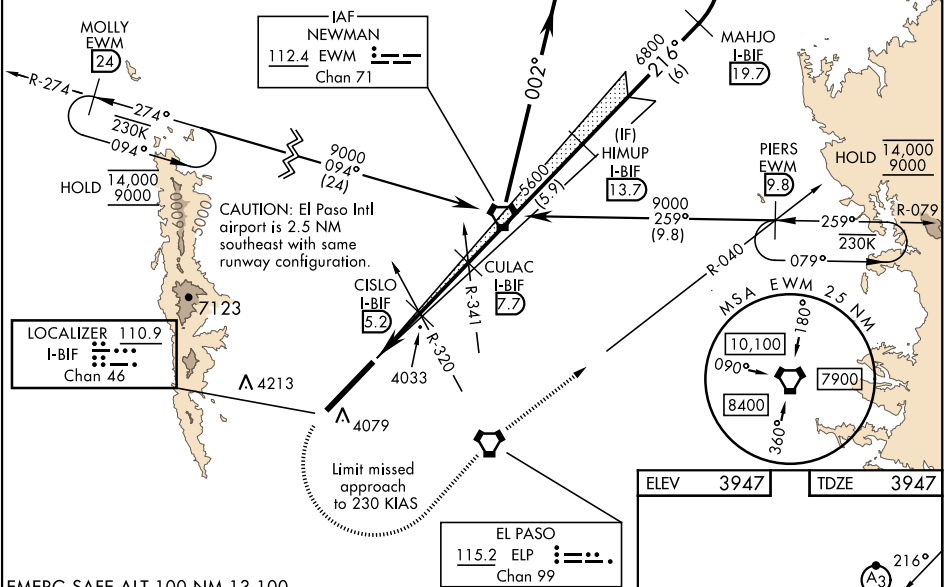
<b>EL PASO ATIS</b> <b>120.0 254.3</b>	<b>EL PASO APP</b> <b>119.15 353.5</b> (S of V16) <b>124.25 298.85</b> (N of V16)	<b>TOWER</b> <b>127.9 342.25</b>	<b>GND CON</b> <b>121.6 251.125</b>	<b>EL PASO CLNC HOLD</b> <b>125.0 379.1</b>	ASR
---	---	-------------------------------------	--	--	-----

Arrivals expect RADAR vectors to final when restricted areas are active.

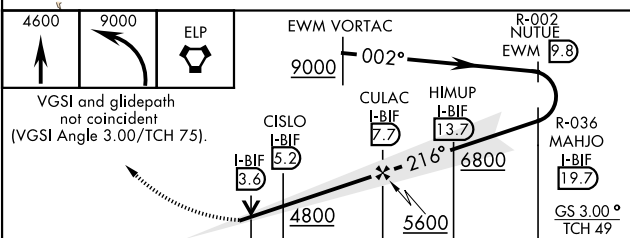
Procedure NA via V-94-611, T317 westbound without holding at MOLLY. ATC clearance required.

Procedure NA via V-560 eastbound without holding at PIERS. ATC clearance required.

Inop table does not apply.



EMERG SAFE ALT 100 NM 13,100



CATEGORY	A	B	C	D	E
S-ILS 22	4147- $\frac{3}{4}$	200	(200- $\frac{3}{4}$ )		
S-LOC 22	4300-1	353	(400-1)		
<b>CIRCLING*</b>	4380-1 433 (500-1)	4400-1 453 (500-1)	4560-1 $\frac{3}{4}$ 613 (700-1 $\frac{3}{4}$ )	4560-2 613 (700-2)	4560-2 $\frac{1}{4}$ 613 (700-2 $\frac{1}{4}$ )

HIRL Rwy 04-22  
REIL Rwy 04, 22

FAF to MAP 5.0 NM					
Knots	60	90	120	150	180
Min:Sec	5:00	3:20	2:30	2:00	1:40

ILS or LOC RWY 22

SC-3, 10 JUL 2025 to 07 AUG 2025

SC-3, 10 JUL 2025 to 07 AUG 2025