




| | | |
|--|------------------------|---|
| WAAS CH 99527 W24A | APP CRS 242° | Rwy Ldg 7799 TDZE 955 Apt Elev 955 |
|--|------------------------|---|

RNAV (GPS) RWY 24

ELMIRA/CORNING RGNL (ELM)

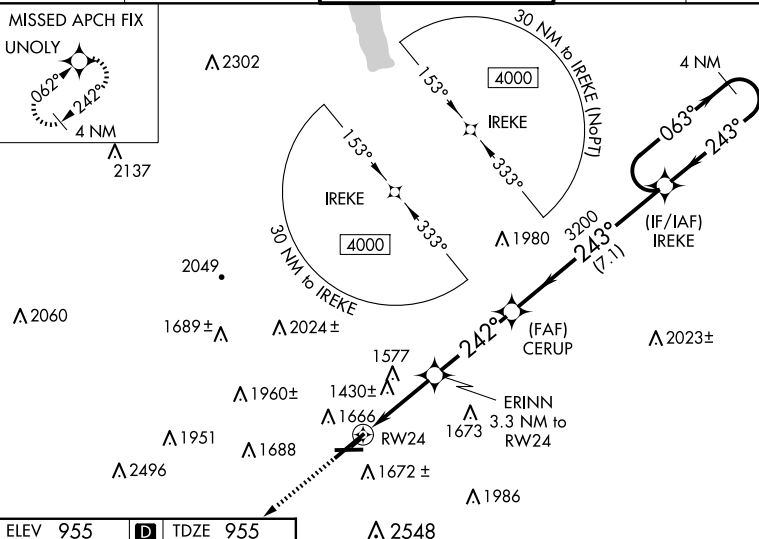
| | |
|---|--|
|    -22°C | Circling Rwy 10 NA at night. Circling NA for Cat D south of Rwy 10-28. Circling NA to Rwy5 5 and 23. DME/DME RNP-0.3 NA. For uncompensated Baro-VNAV systems, LNAV/VNAV NA below -20°C (-4°F) or above 54°C (130°F). When local altimeter setting not received, use Penn VNAV altimeter setting and increase all DA 73 feet and all MDA 80, and increase LPV all Cats and LNAV Cats C/D visibility ¼ mile and LNAV/VNAV all Cats visibility 1½ mile; info table does not apply to LNAV/VNAV all Cats; for inop MALSR, increase LPV DA** all Cats visibility to ¾ and LPV all Cats visibility to 1½. Baro-VNAV and VDP NA when using Penn VNAV altimeter setting. For inop MALSR, increase LNAV Cats C/D visibility to 2½ mile. **Missed approach requires a minimum climb of 260 feet per NM to 2300. ** RVR 1800 authorized with use of FD or AP or HUD to DA, NA when using Penn VNAV altimeter setting. |
|---|--|

MALSR

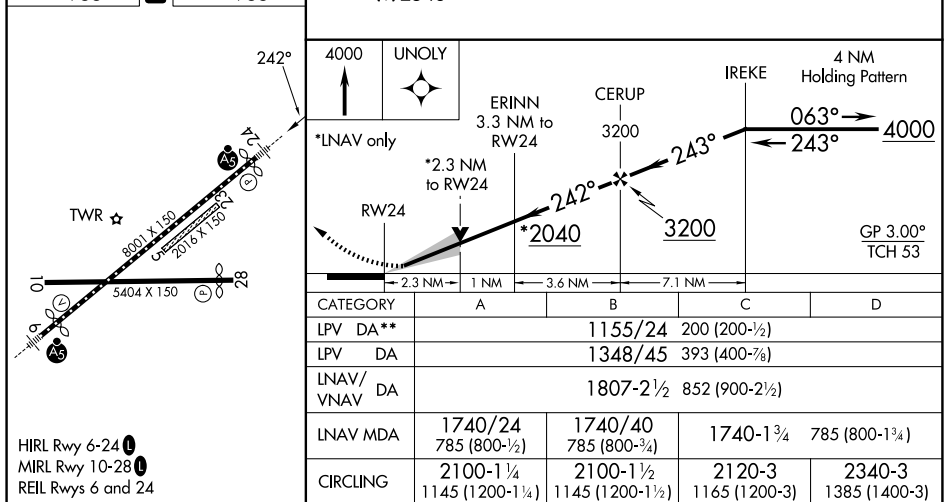
MISSED APPROACH:
Climb to 4000 direct
UNOLY and hold.

| | | | | | |
|------------------------|--|---|-------------------------|--------------------------|-------------------------|
| ATIS 125.475 | ELMIRA APP CON ★ 128.425 257.8 | ELMIRA TOWER ★ 121.1 (CTAF) 0 257.8 | GND CON 121.9 | CLNC DEL 121.9 | UNICOM 122.95 |
|------------------------|--|---|-------------------------|--------------------------|-------------------------|

MISSED APCH FIX
UNOLY ▲



| | | |
|----------|----------|----------|
| ELEV 955 | D | TDZE 955 |
|----------|----------|----------|



RNAV (GPS) RWY 24