


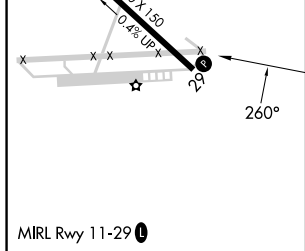
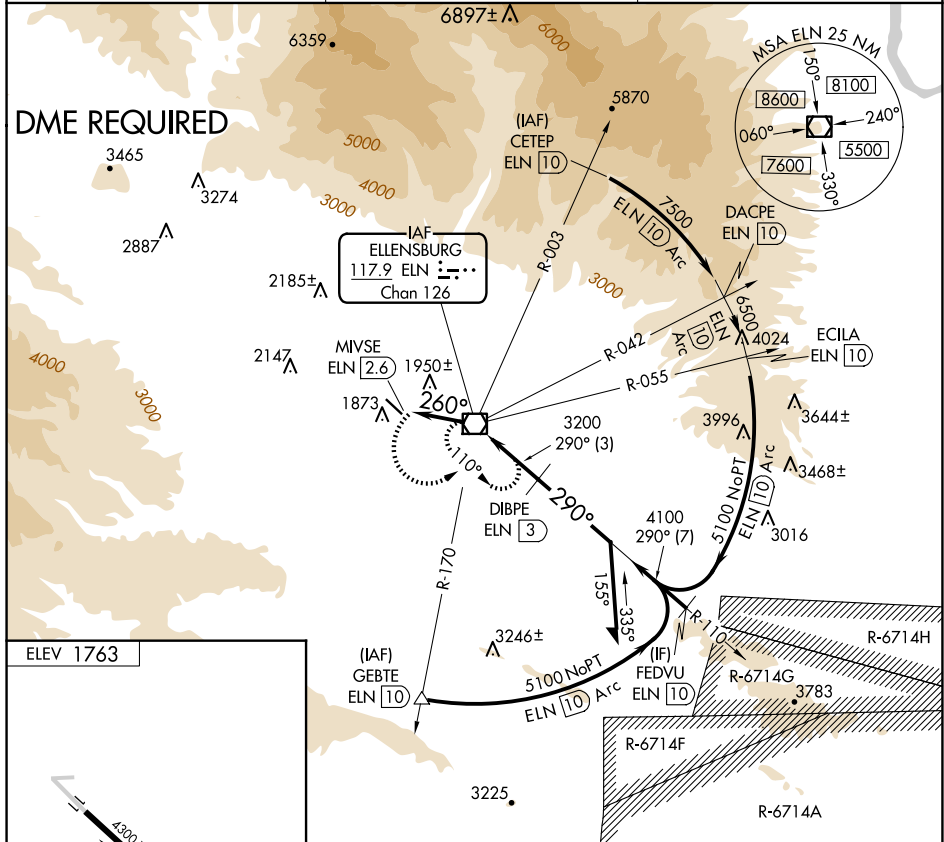
25107

VOR/DME ELN <b>117.9</b> Chan <b>126</b>	APP CRS <b>260°</b>	Rwy Idg TDZE Apt Elev	<b>N/A</b> <b>N/A</b> <b>1763</b>
--	------------------------	-----------------------------	---

VOR-A  
BOWERS FLD (ELN)

 NA	Procedure NA when R-6714A, F, G, H are in operation. DME required.	MISSED APPROACH: Climbing left turn to 5000 direct ELN VOR/DME and hold.
--	---	---

ASOS <b>118,375</b>	SEATTLE CENTER <b>132.6 269.35</b>	UNICOM <b>123.0 (CTAF) 0</b>
------------------------	---------------------------------------	---------------------------------



FAF to MAP 2.6 NM						CATEGORY	A	B	C	D
Knots	60	90	120	150	180	CIRCLING	2280-1	2420-1	NA	
Min:Sec	2:36	1:44	1:18	1:02	0:52		517 (600-1)	657 (700-1)		

ELLENSBURG, WASHINGTON

Amdt 3C 15JUL21

47°02'N-120°32'W

BOWERS FLD (ELN)

VOR-A

NW-1, 10 JUL 2025 to 07 AUG 2025