

APP CRS 331°	Rwy Idg TDZE Apt Elev	N/A N/A 1987
------------------------	-----------------------------	---

RNAV (GPS)-A
ELKINS/RANDOLPH COUNTY (JENNINGS RANDOLPH FLD) (EKN)

RNP APCH.

V
A
✶ -20°C

Circling Rwy 14, 23, 32 NA at night. When local altimeter setting not received, use Buckhannon altimeter setting and increase all MDA 100 feet.

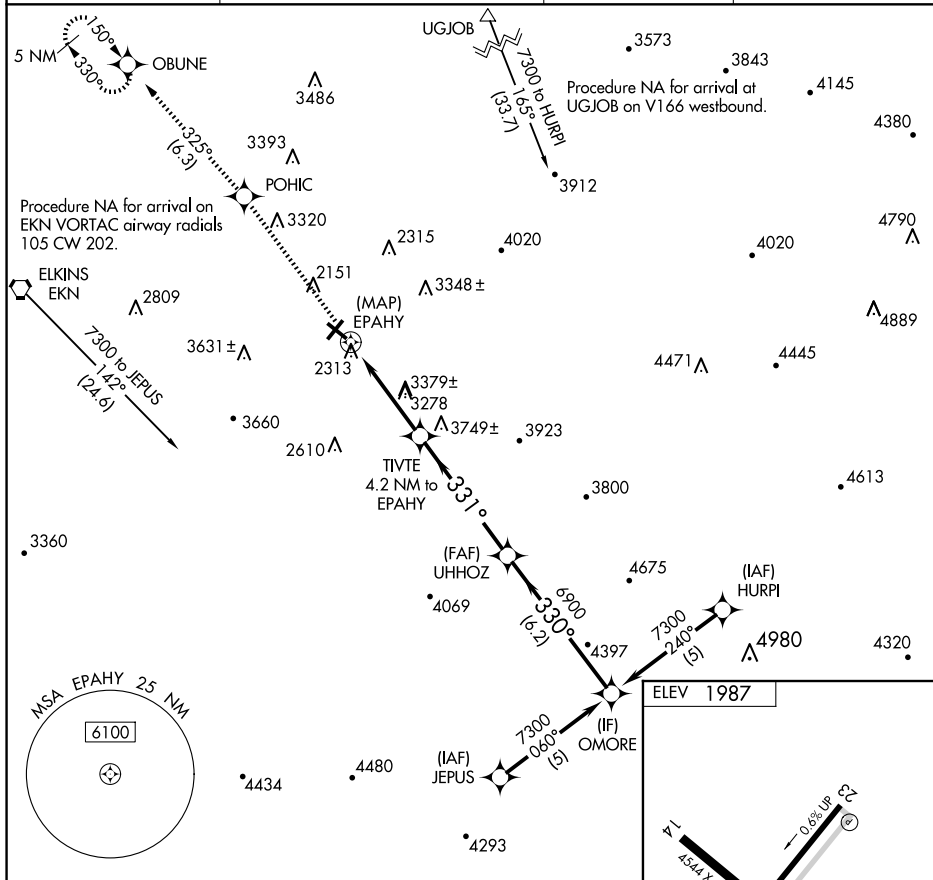
MISSED APPROACH: Climb to 4500
direct POHIC and on track 325°
to OBUNE and hold.



ASOS
119.275

CLARKSBURG APP CON ★
121.15 284.65

CTAF
123.6

122.9 L



4500	POHIC	tr 325°	OBUNE
			

Visual Segment - Obstacles.

OMORE

TIVTE
4.2 NM to
EPAHY

UHHOZ

7300

33
5200

5900

4.2 NM
A
3640-1 $\frac{1}{4}$
1653 (1700-1 $\frac{1}{4}$)

5.3 NM
B
3640-1½
1653 (1700-1½)

6.2 NM
C
3720-3
1733 (1800-3)

NAME	DATE

MIRL Rwy 5-23 **L**
REIL Rwy 23 **L**

ELKINS, WEST VIRGINIA
Orig-B 05NOV20

ELKINS/RANDOLPH COUNTY (JENNINGS RANDOLPH FLD) (EKN)
28°52'N 70°51'W

RNAV (GPS)-A

NE-4, 10 JUL 2025 to 07 AUG 2025

NE-4, 10 JUL 2025 to 07 AUG 2025