

APP CRS
211°

Rwy Idg
TDZE
Apt Elev

4501
1958
1987

ELKINS/RANDOLPH COUNTY (JENNINGS RANDOLPH FLD) (EKN)

RNAV (GPS) RWY 23

RNP APCH

⚠

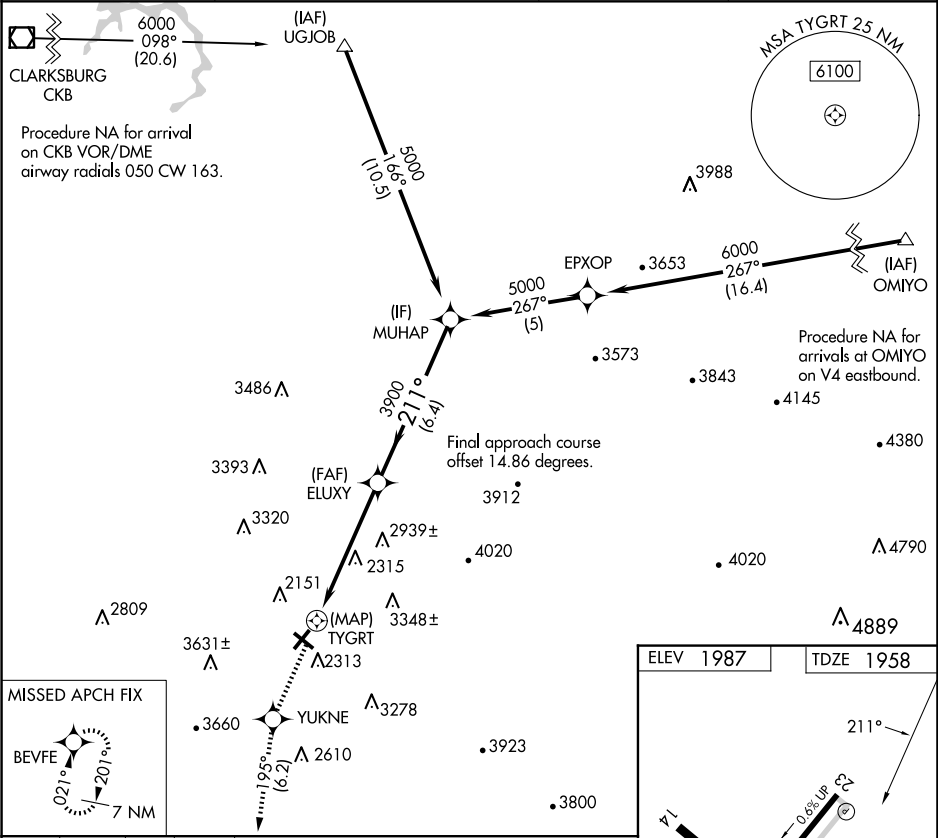
⚠

⚠

Straight-in Rwy 23 NA at night, Circling to Rwy 14, 23, 32 NA at night.
When local altimeter setting not received, use Buckhannon altimeter setting and increase all MDAs 100 feet. Rwy 23 helicopter visibility reduction below 1 SM NA.

MISSED APPROACH: Climb to 6300 direct YUKNE and on track 195° to BEVFE and hold, continue climb-in hold to 6300.

ASOS 119.275	CLARKSBURG APP CON ★ 121.15 284.65	CTAF 123.6	122.9 0
-----------------	---------------------------------------	---------------	---------



6300 YUKNE tr 195° BEVFE

Visual Segment - Obstacles.

MUHAP

TYGRT

ELUXY

5000

3900

211°

0.5

5.4 NM

6.4 NM

CATEGORY	A	B	C	D
LNNAV MDA	3160-1¼ 1202 (1200-1¼)	3160-1½ 1202 (1200-1½)	3160-3 1202 (1200-3)	
CIRCLING	3160-1¼ 1173 (1200-1¼)	3160-1½ 1173 (1200-1½)	3720-3 1733 (1800-3)	NA

REIL Rwy 23 0

MIRL Rwy 5-23 0

ELEV 1987

TDZE 1958

211°

0.6% UP

0.1% UP

1.0% UP

2162 ☆