

WAAS
CH **63207**
W31A

APP CRS
309°

Rwy Idg
TDZE **882**
Apt Elev **887**

RNAV (GPS) RWY 31

MAVERICK COUNTY MEML INTL (5T9)

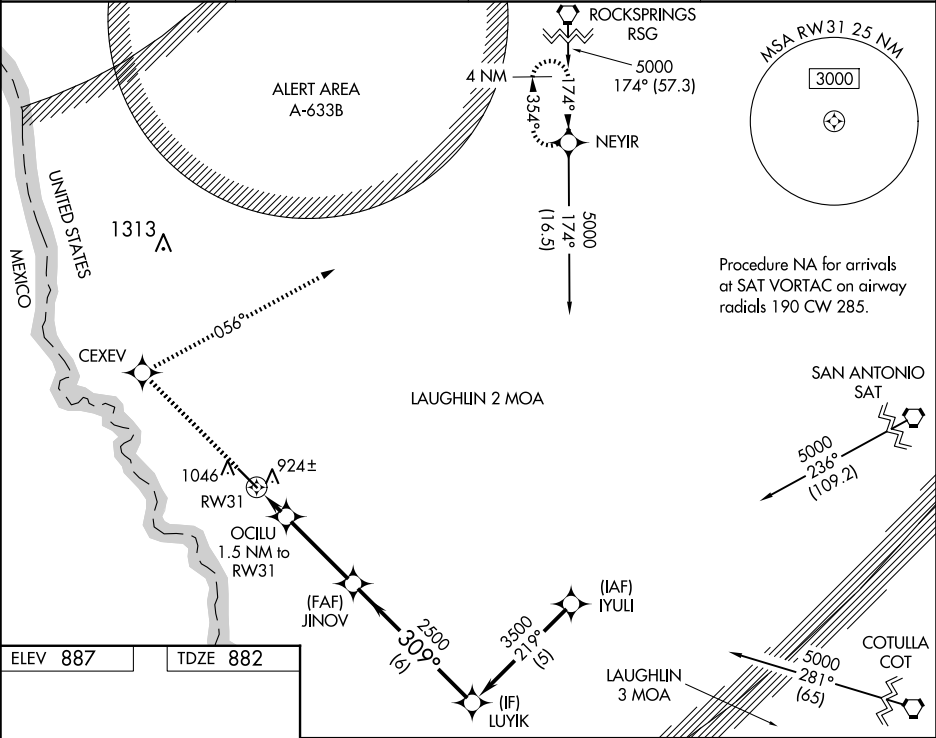
▼

NA

Baro-VNAV NA. DME/DME RNP-0.3 NA. Use Laughlin AFB altimeter setting; when not received, use Del Rio Intl altimeter setting.

MISSED APPROACH: Climb to 4000 direct CEXEV and via 056° track to NEYIR and hold.

AWOS-3 119.175	KDLF ATIS★ 114.4 269.9	DEL RIO APP CON ★ 127.75 326.2	UNICOM 122.8 (CTAF) 0
--------------------------	----------------------------------	--	---------------------------------



ELEV **887**

TDZE **882**

4000		CEXEV	NEYIR	Procedure Turn NA	
↑		✱	tr 056°	✱	
*LNAV only.		OCILU 1.5 NM to RW31	JINOV	LUYIK	
RW31		1400*	2500	3500	
1.5 NM		3.4 NM	6 NM	GP 3.00° TCH 40	
CATEGORY	A	B	C	D	
LPV DA	1236-1¼		354 (400-1¼)	NA	
LNAV/VNAV DA	1298-1½		416 (500-1½)	NA	
LNAV MDA	1280-1		398 (400-1)	NA	
CIRCLING	1500-1	613 (700-1)	1500-1¾ 613 (700-1¾)	NA	