



TACAN LKI	APP CRS	Rwy ldg	10062
Chan 11	087°	TDZE	1428
(135.4)		Apt Elev	1428

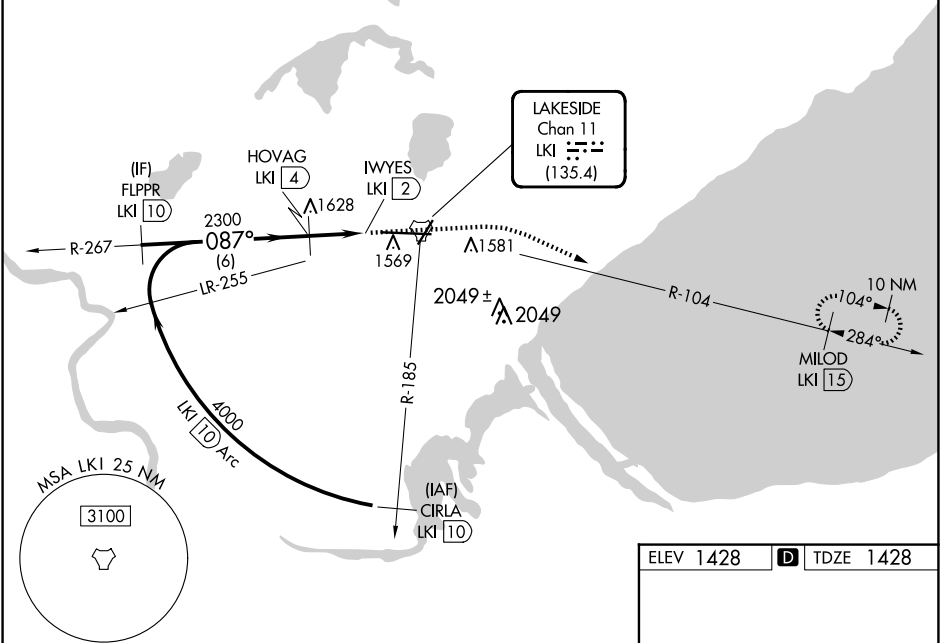
TACAN Y RWY 9

DULUTH INTL (DLH)

RADAR required for procedure entry.		ALSf-2 	MISSED APPROACH: Climb to 2500, then climbing right turn to 4000 on LKI TACAN R-104 to MILOD/1.5 DME and hold.
	* For inop ALS, increase S-9 Cat E visibility to 1¾ SM. # Circling NA for Cats D and E southeast of Rwys 3 and 27.		

ATIS 124.1 270.1	DULUTH APP CON 125.45 233.7	DULUTH TOWER 118.3 257.8	GND CON 121.9 348.6
---------------------	--------------------------------	-----------------------------	------------------------

CAUTION: Do not select channel 73 "DLH" for channel 11 "LKI".  
Towers 2049' on R-099 channel 73 "DLH".



EMERGENCY SAFE ALT 100 NM 4100

VGSI and descent angles not coincident  
(VGSI Angle 3.00/TCH 70).

2500 4000  
↑ ↗  
LKI R-104 MILOD LKI 15

CIRLA LKI 10 FLPPR LKI 10

4000 4000 087° 2300 3.00° TCH 50

LKI 10 Arc

HOVAG LKI 4 LKI 2.6 IWYES LKI 2 TACAN

6 NM 1.4 NM 0.6 0.6

CATEGORY	A	B	C	D	E
S-9 *	1880/24	452 (500-½)	1880/45	452 (500-¾)	
CIRCLING#	1920-1	492 (500-1)	1940-1½ 512 (600-1½)	2020-2 592 (600-2)	2060-2¼ 632 (700-2¼)

TDZ/CL Rwy 9  
REIL Rwys 3 and 21  
HIRL Rwys 9-27  
MIRL Rwys 3-21